



## LKB1 (Ab-334) Antibody

E11-8127B

**Catalog Number:** E11- 8127B

**Concentration:** 1mg/ml

**Swiss-Prot No.:** Q15831

**Other Names:** AMPKK; EC 2.7.11.1; kinase LKB1; PJS; serine/threonine kinase 11 gene (LKB1); Serine/threonine kinase KPM; Serine/threonine protein kinase 11; STK11

**Storage/Stability:** Store at -20°C/1 year

**Form of Antibody:** Rabbit IgG in phosphate buffered saline (without  $Mg^{2+}$  and  $Ca^{2+}$ ), pH 7.4, 150mM NaCl, 0.02% sodium azide and 50% glycerol.

**Immunogen:** The antiserum was produced against synthesized non-phosphopeptide derived from human LKB1 around the phosphorylation site of serine 334 (W-R-S<sup>P</sup>-M-T).

**Purification:** The antibody was affinity-purified from rabbit antiserum by affinity-chromatography using epitope-specific immunogen.

**Specificity:** LKB1 (Ab-334) antibody detects endogenous levels of total LKB1 protein.

**Reactivity:** Human (Identities = 100%, Positives = 100%);  
Mouse (Identities = 100%, Positives = 100%)

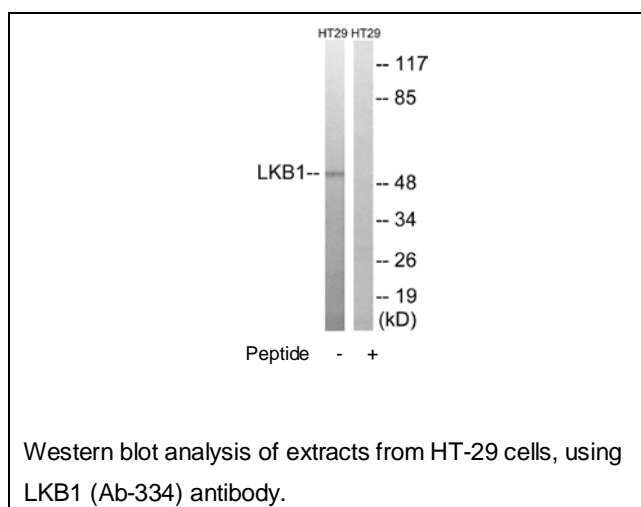
**Applications:** WB: 1:500~1:1000 ELISA: 1:20000

**References:**

Nezu J.; ubmitted (AUG-1996) to the EMBL/GenBank/DDBJ databases.

Jenne D.E., at. Genet. 18:38-43(1998).

Bignell G.R., ancer Res. 58:1384-1386(1998).



**For Research Use Only**