

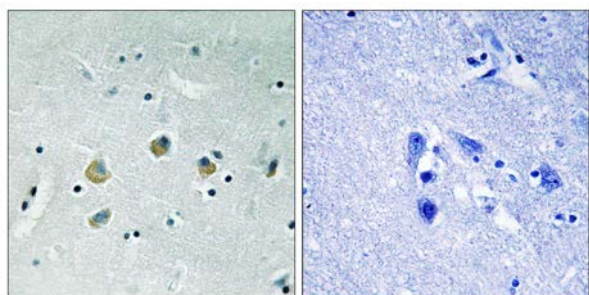


MAP3K8 (Phospho-Ser400) Antibody

E11-8134A

Catalog Number: E11-8134A**Concentration:** 1mg/ml**Swiss-Prot No.:** P41279**Other Names:** C-COT; cancer Osaka thyroid oncogene; COT proto-oncogene serine/threonine-protein kinase; EC 2.7.11.25; kinase Cot; M3K8; MAP3K8; mitogen-activated protein kinase kinase kinase 8; TPL-2; Tpl2; TPL2; tumor progression locus 2**All Sites:** Human: Ser400; Mouse: Ser400; Rat: Ser400**Storage/Stability:** Store at -20 °C/1 year**Form of Antibody:** Rabbit IgG in phosphate buffered saline (without Mg^{2+} and Ca^{2+}), pH 7.4, 150mM NaCl, 0.02% sodium azide and 50% glycerol.**Immunogen:** The antiserum was produced against synthesized phosphopeptide derived from human MAP3K8 around the phosphorylation site of serine 400 (C-Q-S^P-L-D).**Purification:** The antibody was affinity-purified from rabbit antiserum by affinity-chromatography using epitope-specific phosphopeptide. The antibody against non-phosphopeptide was removed by chromatography using non-phosphopeptide corresponding to the phosphorylation site.**Specificity:** MAP3K8 (Phospho-Ser400) antibody detects endogenous levels of MAP3K8 only when phosphorylated at serine 400.**Reactivity:** Human (Identities = 100%, Positives = 100%);
Mouse (Identities = 100%, Positives = 100%);
Rat (Identities = 100%, Positives = 100%)**Applications:** IHC: 1:50~1:100 ELISA: 1:1000**References:**

Miyoshi J., Mol. Cell. Biol. 11:4088-4096(1991).
Aoki M., J. Biol. Chem. 268:22723-22732(1993).
Chan A.M., Oncogene 8:1329-1333(1993).



P-peptide - +
Immunohistochemistry analysis of paraffin-embedded human brain tissue using MAP3K8 (Phospho-Ser400) antibody.

For Research Use Only