



## MAP3K8 (Ab-400) Antibody

E11-8134B

**Catalog Number:** E11-8134B

**Concentration:** 1mg/ml

**Swiss-Prot No.:** P41279

**Other Names:** C-COT; cancer Osaka thyroid oncogene; COT proto-oncogene serine/threonine-protein kinase; EC 2.7.11.25; kinase Cot; M3K8; MAP3K8; mitogen-activated protein kinase kinase kinase 8; TPL-2; Tpl2; TPL2; tumor progression locus 2

**Storage/Stability:** Store at -20°C/1 year

**Form of Antibody:** Rabbit IgG in phosphate buffered saline (without  $Mg^{2+}$  and  $Ca^{2+}$ ), pH 7.4, 150mM NaCl, 0.02% sodium azide and 50% glycerol.

**Immunogen:** The antiserum was produced against synthesized non-phosphopeptide derived from human MAP3K8 around the phosphorylation site of serine 400

(C-Q-S<sup>P</sup>-L-D).

**Purification:** The antibody was affinity-purified from rabbit antiserum by affinity-chromatography using epitope-specific immunogen.

**Specificity:** MAP3K8 (Ab-400) antibody detects endogenous levels of total MAP3K8 protein.

**Reactivity:** Human (Identities = 100%, Positives = 100%);  
Mouse (Identities = 100%, Positives = 100%);  
Rat (Identities = 100%, Positives = 100%)

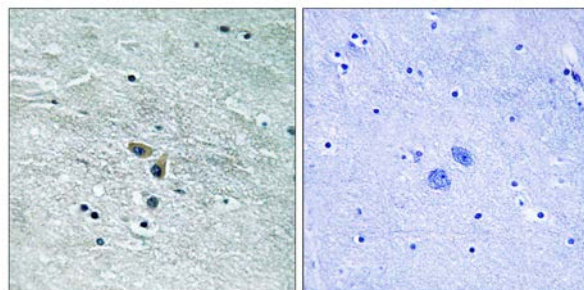
**Applications:** WB: 1:500~1:1000 IHC: 1:50~1:100  
ELISA: 1:5000

**References:**

Miyoshi J., Mol. Cell. Biol. 11:4088-4096(1991).

Aoki M., J. Biol. Chem. 268:22723-22732(1993).

Chan A.M., Oncogene 8:1329-1333(1993).

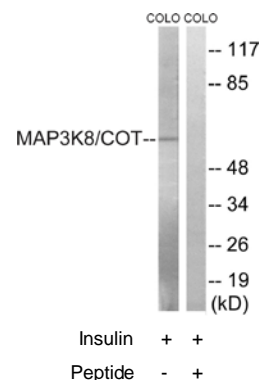


Peptide

-

+

Immunohistochemistry analysis of paraffin-embedded human brain tissue using MAP3K8 (Ab-400) antibody.



Western blot analysis of extracts from COLO cells, treated with Insulin (0.01U/ml, 15mins), using MAP3K8 (Ab-400) antibody.

**For Research Use Only**