



MER/SKY(Phospho-Tyr749/681) Antibody

E11-8138A

Catalog Number: E11-8138A

Concentration: 1mg/ml

Swiss-Prot No.: Q12866/Q06418

Other Names: C-mer; EC 2.7.10.1; kinase Mer; MERK; MERTK; proto-oncogene tyrosine-protein kinase MER precursor; receptor tyrosine kinase MerTK

All Sites: Human: Tyr749/681; Mouse: Tyr744/671; Rat: Tyr744/671

Storage/Stability: Store at -20 °C/1 year

Form of Antibody: Rabbit IgG in phosphate buffered saline (without Mg^{2+} and Ca^{2+}), pH 7.4, 150mM NaCl, 0.02% sodium azide and 50% glycerol.

Immunogen: The antiserum was produced against synthesized phosphopeptide derived from human MER/SKY around the phosphorylation site of tyrosine 749/681 (K-I-Y^P-S-G).

Purification: The antibody was affinity-purified from

rabbit antiserum by affinity-chromatography using epitope-specific phosphopeptide. The antibody against non-phosphopeptide was removed by chromatography using non-phosphopeptide corresponding to the phosphorylation site.

Specificity: MER/SKY (Phospho-Tyr749/681) antibody detects endogenous levels of MER/SKY only when phosphorylated at tyrosine 749/681.

Reactivity: Human (Identities = 100%, Positives = 100%);

Mouse (Identities = 100%, Positives = 100%);

Rat (Identities = 100%, Positives = 100%)

Applications: WB: 1:500~1:1000 IHC: 1:50~1:100

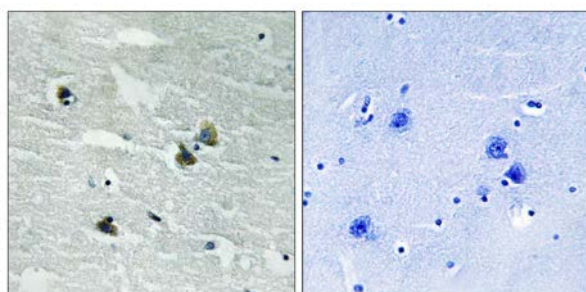
ELISA: 1:10000

References:

Graham D.K., Cell Growth Differ. 5:647-657(1994).

Gal A., Nat. Genet. 26:270-271(2000).

Hillier L.W., Nature 434:724-731 (2005).

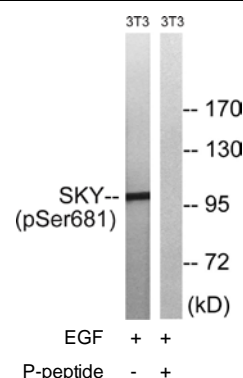


P-peptide

-

+

Immunohistochemistry analysis of paraffin-embedded human brain tissue using MER/SKY (Phospho-Tyr749/681) antibody.



Western blot analysis of extracts from 3T3 cells, treated with EGF (200ng/ml, 5mins), using MER/SKY (Phospho-Tyr749/681) antibody.

For Research Use Only