



## MAP2K7 (Phospho-Ser271) Antibody

E11-8140A

**Catalog Number:** E11-8140A

**Concentration:** 1mg/ml

**Swiss-Prot No.:** O14733

**Other Names:** c-Jun N-terminal kinase kinase 2; Dual specificity mitogen-activated protein kinase kinase 7; EC 2.7.12.2; JNK activating kinase 2; JNK kinase 2; JNKK 2; JNKK2; kinase MKK7; MAP kinase kinase 7; MAP2K7; MAPK/ERK kinase 7; MAPKK 7; MP2K7; PRKMK7

**All Sites:** Human: Ser271; Mouse: Ser287; Rat: Ser271

**Storage/Stability:** Store at -20 °C/1 year

**Form of Antibody:** Rabbit IgG in phosphate buffered saline (without  $Mg^{2+}$  and  $Ca^{2+}$ ), pH 7.4, 150mM NaCl, 0.02% sodium azide and 50% glycerol.

**Immunogen:** The antiserum was produced against synthesized phosphopeptide derived from human MAP2K7 around the phosphorylation site of serine 271 (V-D-S<sup>P</sup>-K-A).

**Purification:** The antibody was affinity-purified from

rabbit antiserum by affinity-chromatography using epitope-specific phosphopeptide. The antibody against non-phosphopeptide was removed by chromatography using non-phosphopeptide corresponding to the phosphorylation site.

**Specificity:** MAP2K7 (Phospho-Ser271) antibody detects endogenous levels of MAP2K7 only when phosphorylated at serine 271.

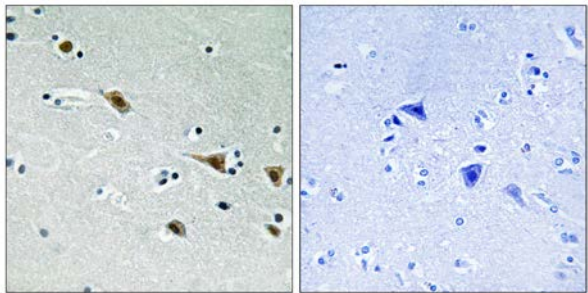
**Reactivity:** Human (Identities = 100%, Positives = 100%);  
Mouse (Identities = 100%, Positives = 100%);  
Rat (Identities = 100%, Positives = 100%)

**Applications:** WB: 1:500~1:1000 IHC: 1:50~1:100  
ELISA: 1:20000

**References:**

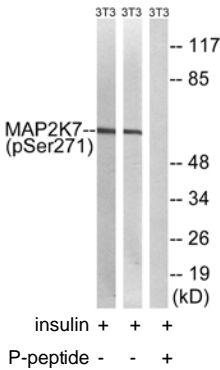
Wu Z., Mol. Cell. Biol. 17:7407-7416(1997).  
Lu X., J. Biol. Chem. 272:24751-24754(1997).  
Foltz I.N., J. Biol. Chem. 273:9344-9351(1998).

**For Research Use Only**



P-peptide                      -                      +

Immunohistochemistry analysis of paraffin-embedded human brain tissue using MAP2K7 (Phospho-Ser271) antibody.



Lane 1: The extracts from 3T3 cells treated with insulin (0.01U/ml, 15mins) using MAP2K7 (Phospho-Ser271) antibody  
Lane 2: The extracts from 3T3 cells treated with insulin (0.01U/ml, 15mins) using MAP2K7 (Ab-271) antibody  
Lane 3: The extracts from 3T3 cells treated with insulin (0.01U/ml, 15mins) plus phosphopeptide using MAP2K7 (Phospho-Ser271) antibody