



MAP2K7 (Phospho-Thr275) Antibody

E11-8141A

Catalog Number: E11-8141A

Concentration: 1mg/ml

Swiss-Prot No.: O14733

Other Names: c-Jun N-terminal kinase kinase 2; Dual specificity mitogen-activated protein kinase kinase 7; EC 2.7.12.2; JNK activating kinase 2; JNK kinase 2; JNKK 2; JNKK2; kinase MKK7; MAP kinase kinase 7; MAP2K7; MAPK/ERK kinase 7; MAPKK 7; MP2K7; PRKMK7

All Sites: Human: Thr275; Mouse: Thr291; Rat: Thr275

Storage/Stability: Store at -20 °C/1 year

Form of Antibody: Rabbit IgG in phosphate buffered saline (without Mg^{2+} and Ca^{2+}), pH 7.4, 150mM NaCl, 0.02% sodium azide and 50% glycerol.

Immunogen: The antiserum was produced against synthesized phosphopeptide derived from human MAP2K7 around the phosphorylation site of threonine 275 (A-K-T^P-R-S).

Purification: The antibody was affinity-purified from

rabbit antiserum by affinity-chromatography using epitope-specific phosphopeptide. The antibody against non-phosphopeptide was removed by chromatography using non-phosphopeptide corresponding to the phosphorylation site.

Specificity: MAP2K7 (Phospho-Thr275) antibody detects endogenous levels of MAP2K7 only when phosphorylated at threonine 275.

Reactivity: Human (Identities = 100%, Positives = 100%);
Mouse (Identities = 100%, Positives = 100%);
Rat (Identities = 100%, Positives = 100%)

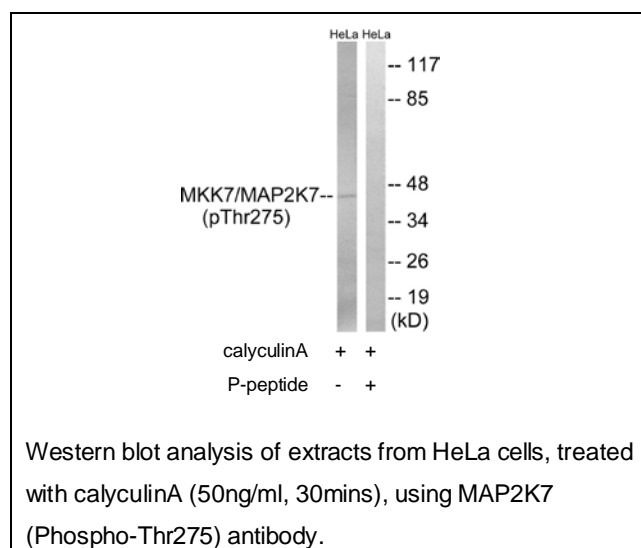
Applications: WB: 1:500~1:1000 ELISA: 1:20000

References:

Wu Z., Mol. Cell. Biol. 17:7407-7416(1997).

Lu X., J. Biol. Chem. 272:24751-24754(1997).

The MGC Project Team; Genome Res. 14:2121-2127(2004).



For Research Use Only