



## MLK1/2 (Phospho-Thr312/266) Antibody

E11-8142A

**Catalog Number:** E11-8142A

**Concentration:** 1mg/ml

**Swiss-Prot No.:** P80192/Q02779

**Other Names:** EC 2.7.11.25; M3K9; mitogen-activated protein kinase kinase kinase 9; mixed-lineage protein kinase 1; PRKE1

**All Sites:** Human: Thr312/266; Mouse: Thr305/266

**Storage/Stability:** Store at -20 °C/1 year

**Form of Antibody:** Rabbit IgG in phosphate buffered saline (without  $Mg^{2+}$  and  $Ca^{2+}$ ), pH 7.4, 150mM NaCl, 0.02% sodium azide and 50% glycerol.

**Immunogen:** The antiserum was produced against synthesized phosphopeptide derived from human MLK1/2 around the phosphorylation site of threonine 312/266 (A-G-T<sup>P</sup>-Y-A).

**Purification:** The antibody was affinity-purified from

rabbit antiserum by affinity-chromatography using epitope-specific phosphopeptide. The antibody against non-phosphopeptide was removed by chromatography using non-phosphopeptide corresponding to the phosphorylation site.

**Specificity:** MLK1/2 (Phospho-Thr312/266) antibody detects endogenous levels of MLK1/2 only when phosphorylated at threonine 312/266.

**Reactivity:** Human (Identities = 100%, Positives = 100%);  
Mouse (Identities = 100%, Positives = 100%)

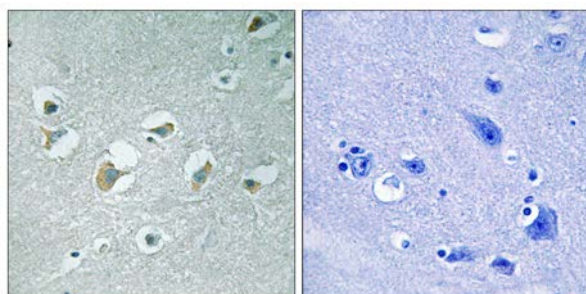
**Applications:** IHC: 1:50~1:100 ELISA: 1:5000

### References:

Durkin J.T., Biochemistry 43:16348-16355(2004).

The MGC Project Team; Genome Res. 14:2121-2127(2004).

Dorow D.S., Nature 446:153-158(2007).

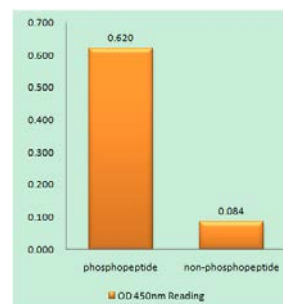


P-peptide

-

+

Immunohistochemistry analysis of paraffin-embedded human brain tissue using MLK1/2 (Phospho-Thr312/266) antibody.



MLK1/2 (Phospho-Thr312/266) antibody reacts with epitope-specific phosphopeptide and corresponding non-phosphopeptide. The absorbance readings at 450 nm are shown in the ELISA figure.

**For Research Use Only**