



## MLK1/2 Antibody

E11-8142B

**Catalog Number:** E11-8142B

**Concentration:** 1mg/ml

**Swiss-Prot No.:** P80192/Q02779

**Other Names:** EC 2.7.11.25; Mixed lineage kinase 1/EC 2.7.11.25; Mixed lineage kinase 2; Protein kinase MST

**Storage/Stability:** Store at -20°C/1 year

**Form of Antibody:** Rabbit IgG in phosphate buffered saline (without  $Mg^{2+}$  and  $Ca^{2+}$ ), pH 7.4, 150mM NaCl, 0.02% sodium azide and 50% glycerol.

**Immunogen:** The antiserum was produced against synthesized peptide derived from Internal of human MLK1/2.

**Purification:** The antibody was affinity-purified from

rabbit antiserum by affinity-chromatography using epitope-specific immunogen.

**Specificity:** MLK1/2 antibody detects endogenous levels of total MLK1/2 protein.

**Reactivity:** Human (Identities = 100%, Positives = 100%);  
Mouse (Identities = 100%, Positives = 100%)

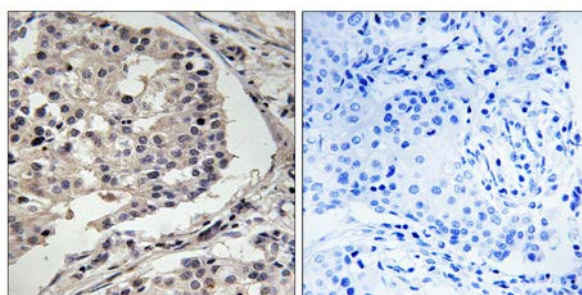
**Applications:** IHC: 1:50~1:100 ELISA: 1:1000

**References:**

Durkin J.T., Biochemistry 43:16348-16355(2004).

The MGC Project Team; Genome Res. 14:2121-2127(2004).

Dorow D.S., Nature 446:153-158(2007).



Peptide

-

+

Immunohistochemistry analysis of paraffin-embedded human breast carcinoma tissue using MLK1/2 antibody.

**For Research Use Only**