



MSK1 (Phospho-Ser212) Antibody

E11-8147A

Catalog Number: E11-8147A

Concentration: 1mg/ml

Swiss-Prot No.: O75582

Other Names: 90 kDa ribosomal protein S6 kinase, polypeptide 5; EC 2.7.11.1; kinase MSK1; KS6A5; MSPK1; Nuclear mitogen- and stress-activated protein kinase-1; ribosomal protein S6 kinase, polypeptide V; RLPK; RPS6KA5

All Sites: Human: Ser212; Mouse: Ser211

Storage/Stability: Store at -20 °C/1 year

Form of Antibody: Rabbit IgG in phosphate buffered saline (without Mg^{2+} and Ca^{2+}), pH 7.4, 150mM NaCl, 0.02% sodium azide and 50% glycerol.

Immunogen: The antiserum was produced against synthesized phosphopeptide derived from human MSK1 around the phosphorylation site of serine 212 (A-Y-S^P-F-C).

Purification: The antibody was affinity-purified from rabbit antiserum by affinity-chromatography using

epitope-specific phosphopeptide. The antibody against non-phosphopeptide was removed by chromatography using non-phosphopeptide corresponding to the phosphorylation site.

Specificity: MSK1 (Phospho-Ser212) antibody detects endogenous levels of MSK1 only when phosphorylated at serine 212.

Reactivity: Human (Identities = 100%, Positives = 100%);
Mouse (Identities = 100%, Positives = 100%)

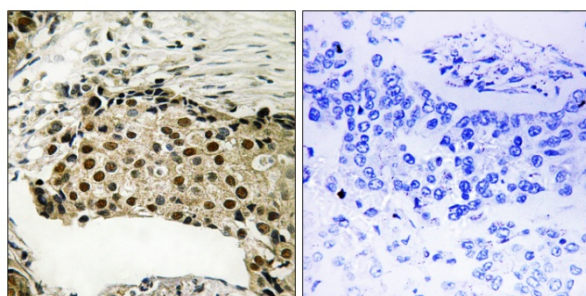
Applications: WB: 1:500~1:1000 IHC: 1:50~1:100
ELISA: 1:40000

References:

Deak M., EMBO J. 17:4426-4441(1998).

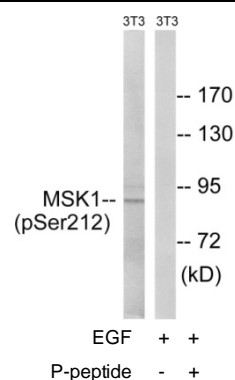
New L., J. Biol. Chem. 274:1026-1032(1999).

Jiang C., Cytogenet. Cell Genet. 87:261-262(1999).



P-peptide - +

Immunohistochemistry analysis of paraffin-embedded human breast carcinoma tissue using MSK1 (Phospho-Ser212) antibody.



Western blot analysis of extracts from 3T3 cells, treated with EGF (200ng/ml, 5mins), using MSK1 (Phospho-Ser212) antibody.

For Research Use Only