



MSK2 (Phospho-Thr568) Antibody

E11-8149A

Catalog Number: E11-8149A

Concentration: 1mg/ml

Swiss-Prot No.: O75676

Other Names: EC 2.7.11.1; kinase MSK2; KS6A4; Ribosomal protein kinase B; RPS6KA4; RSK-B; Similar to ribosomal protein S6 kinase, 90kD, polypeptide 4

All Sites: Human: Thr568; Mouse: Thr568

Storage/Stability: Store at -20 °C/1 year

Form of Antibody: Rabbit IgG in phosphate buffered saline (without Mg^{2+} and Ca^{2+}), pH 7.4, 150mM NaCl, 0.02% sodium azide and 50% glycerol.

Immunogen: The antiserum was produced against synthesized phosphopeptide derived from human MSK2 around the phosphorylation site of threonine 568 (M-Q-T^P-P-C).

Purification: The antibody was affinity-purified from rabbit antiserum by affinity-chromatography using

epitope-specific phosphopeptide. The antibody against non-phosphopeptide was removed by chromatography using non-phosphopeptide corresponding to the phosphorylation site.

Specificity: MSK2 (Phospho-Thr568) antibody detects endogenous levels of MSK2 only when phosphorylated at threonine 568.

Reactivity: Human (Identities = 100%, Positives = 100%); Mouse (Identities = 85%, Positives = 85%)

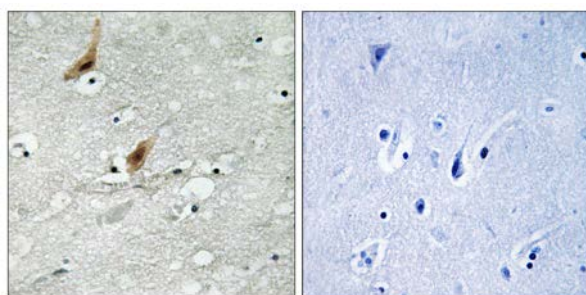
Applications: WB: 1:500~1:1000 IHC: 1:50~1:100
ELISA: 1:40000

References:

Pierrat B., J. Biol. Chem. 273-29661-29671(1998).

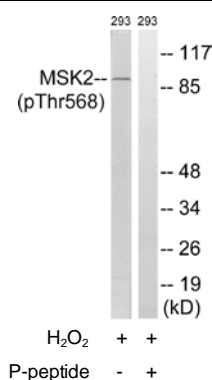
Totoki Y., Submitted (MAR-2005) to the EMBL/GenBank/DDBJ databases.

Deak M., EMBO J. 17:4426-4441(1998).



P-peptide - +

Immunohistochemistry analysis of paraffin-embedded human brain tissue using MSK2 (Phospho-Thr568) antibody.



Western blot analysis of extracts from 293 cells, treated with H_2O_2 (100uM, 15mins), using MSK2 (Phospho-Thr568) antibody.

For Research Use Only