



## MYT1 (Ab-83) Antibody

E11-8151B

**Catalog Number:** E11-8151B

**Concentration:** 100µl, 1mg/ml

**Swiss-Prot No.:** Q99640

**Other Names:** EC 2.7.11.1; kinase Myt1; Kinase MYT1; Membrane-associated tyrosine-and threonine-specific cdc2-inhibitory kinase; MYT1 kinase; Myt1 protein; PKMYT1; PMYT1

**Storage/Stability:** Store at -20°C/1 year

**Form of Antibody:** Rabbit IgG in phosphate buffered saline (without  $Mg^{2+}$  and  $Ca^{2+}$ ), pH 7.4, 150mM NaCl, 0.02% sodium azide and 50% glycerol.

**Immunogen:** The antiserum was produced against synthesized non-phosphopeptide derived from human

MYT1 around the phosphorylation site of serine 83 (R-V-S<sup>P</sup>-F-R).

**Purification:** The antibody was affinity-purified from rabbit antiserum by affinity-chromatography using epitope-specific immunogen.

**Specificity:** MYT1 (Ab-83) antibody detects endogenous levels of total MYT1 protein.

**Reactivity:** Human (Identities = 100%, Positives = 100%)

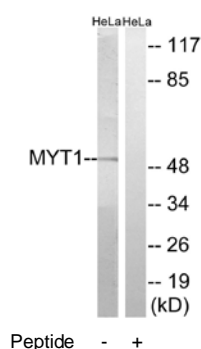
**Applications:** WB: 1:500~1:3000 ELISA: 1:20000

**References:**

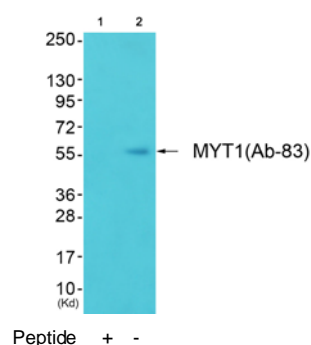
Booher R.N., J. Biol. Chem. 272:22300-22306(1997).

Liu F., Mol. Cell. Biol. 17:571-583(1997).

Martin J., Nature 432:988-994(2004).



Western blot analysis of extracts from HeLa cells, using MYT1 (Ab-83) antibody.



Western blot analysis of extracts from COLO cells, using MYT1 (Ab-83) antibody.

**For Research Use Only**