



## OSR1 (Phospho-Thr185) Antibody

E11-8154A

**Catalog Number:** E11-8154A

**Concentration:** 1mg/ml

**Swiss-Prot No.:** O95747

**Other Names:** EC 2.7.11.1; kinase OSR1;

Oxidative-stress responsive 1; Oxidative-stress responsive 1 homolog; OXSR1

**All Sites:** Human: Thr185; Mouse: Thr185

**Storage/Stability:** Store at -20 °C/1 year

**Form of Antibody:** Rabbit IgG in phosphate buffered saline (without  $Mg^{2+}$  and  $Ca^{2+}$ ), pH 7.4, 150mM NaCl, 0.02% sodium azide and 50% glycerol.

**Immunogen:** The antiserum was produced against synthesized phosphopeptide derived from human OSR1 around the phosphorylation site of threonine 185 (R-K-T<sup>P</sup>-F-V).

**Purification:** The antibody was affinity-purified from rabbit antiserum by affinity-chromatography using

epitope-specific phosphopeptide. The antibody against non-phosphopeptide was removed by chromatography using non-phosphopeptide corresponding to the phosphorylation site.

**Specificity:** OSR1 (Phospho-Thr185) antibody detects endogenous levels of OSR1 only when phosphorylated at threonine 185.

**Reactivity:** Human (Identities = 100%, Positives = 100%);  
Mouse (Identities = 100%, Positives = 100%)

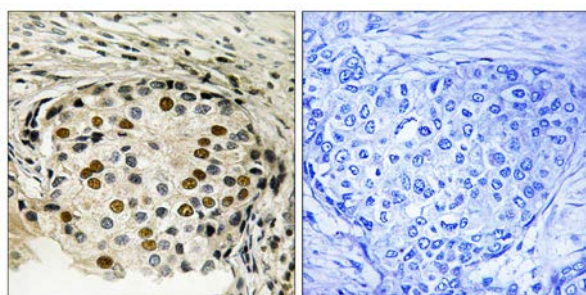
**Applications:** WB: 1:500~1:1000 IHC: 1:50~1:100  
ELISA: 1:10000

### References:

Tamari M., J. Hum. Genet. 44:116-120(1999).

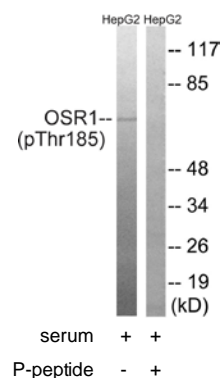
Kikuno R., DNA Res. 6:197-205(1999).

The MGC Project Team; Genome Res. 14:2121-2127(2004).



P-peptide - +

Immunohistochemistry analysis of paraffin-embedded human breast carcinoma tissue using OSR1 (Phospho-Thr185) antibody.



Western blot analysis of extracts from HepG2 cells, treated with serum (20%, 15mins), using OSR1 (Phospho-Thr185) antibody.

**For Research Use Only**