



p70 S6 Kinase β (Ab-423)

E11-8157B

Catalog Number: 8157B

Concentration: 1mg/ml

Swiss-Prot No.: Q9UBS0

Other Names: 14 beta; 70 kDa ribosomal protein S6 kinase 2; EC 2.7.11.1; kinase p70S6K-beta; KS6B2; p70 ribosomal S6 kinase beta; p70 S6Kbeta; p70-S6KB; p70S6K-beta; Ribosomal protein S6 kinase beta 2; RPS6KB2; S6 kinase-related kinase; S6K-beta 2; S6K2; SRK; STK14B

Storage/Stability: Store at -20°C/1 year

Form of Antibody: Rabbit IgG in phosphate buffered saline (without Mg^{2+} and Ca^{2+}), pH 7.4, 150mM NaCl, 0.02% sodium azide and 50% glycerol.

Immunogen: The antiserum was produced against synthesized non-phosphopeptide derived from human

p70 S6 Kinase β around the phosphorylation site of serine 423 (P-V-S^P-P-L).

Purification: The antibody was affinity-purified from rabbit antiserum by affinity-chromatography using epitope-specific immunogen.

Specificity: p70 S6 Kinase β (Ab-423) antibody detects endogenous levels of total p70 S6 Kinase β protein.

Reactivity: Human (Identities = 100%, Positives = 100%);
Mouse (Identities = 84%, Positives = 92%)

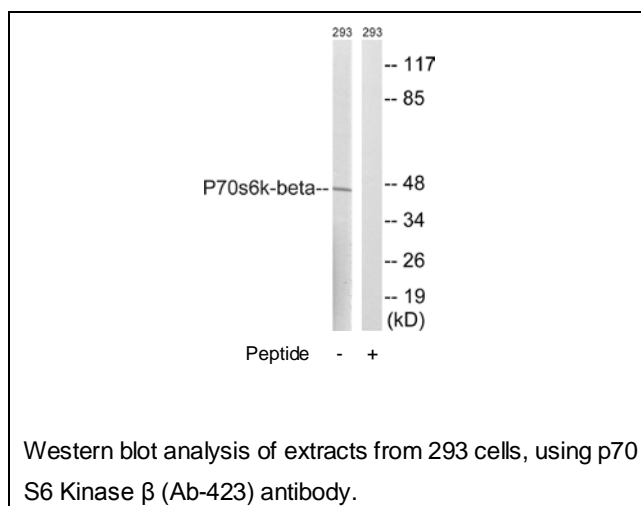
Applications: WB: 1:500~1:1000 ELISA: 1:5000

References:

Gout I.,J. Biol. Chem. 273:30061-30064(1998).

The MGC Project Team;Genome Res. 14:2121-2127(2004).

Olsen J.V.,Cell 127:635-648(2006).



For Research Use Only