



PAK1 (Phospho-Ser204) Antibody

E11-8158A

Catalog Number: E11-8158A

Concentration: 1mg/ml

Swiss-Prot No.: Q13153

Other Names: ADRB2; alpha-PAK; CDC42/RAC effector kinase PAK-A; EC 2.7.11.1; kinase PAK1; p21-activated kinase 1; P65-PAK; P68-PAK; PAK 1; PAK-1; PAKA; protein kinase MUK2

All Sites: Human: Ser204; Mouse: Ser204; Rat: Ser203

Storage/Stability: Store at -20 °C/1 year

Form of Antibody: Rabbit IgG in phosphate buffered saline (without Mg^{2+} and Ca^{2+}), pH 7.4, 150mM NaCl, 0.02% sodium azide and 50% glycerol.

Immunogen: The antiserum was produced against synthesized phosphopeptide derived from human PAK1 around the phosphorylation site of serine 204 (T-R-S^P-V-I).

Purification: The antibody was affinity-purified from rabbit antiserum by affinity-chromatography using

epitope-specific phosphopeptide. The antibody against non-phosphopeptide was removed by chromatography using non-phosphopeptide corresponding to the phosphorylation site.

Specificity: PAK1 (Phospho-Ser204) antibody detects endogenous levels of PAK1 only when phosphorylated at serine 204.

Reactivity: Human (Identities = 100%, Positives = 100%);
Mouse (Identities = 100%, Positives = 100%);
Rat (Identities = 92%, Positives = 92%)

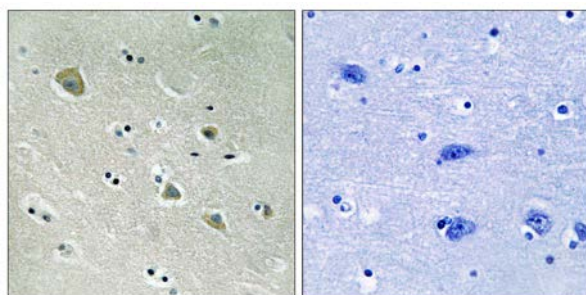
Applications: WB: 1:500~1:1000 IHC: 1:50~1:100
ELISA: 1:1000

References:

Brown J.L., Curr. Biol. 6:598-605(1996).

Sells M.A., Curr. Biol. 7:202-210(1997).

The MGC Project Team; Genome Res. 14:2121-2127(2004).

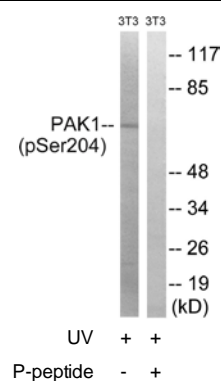


P-peptide

-

+

Immunohistochemistry analysis of paraffin-embedded human brain tissue using PAK1 (Phospho-Ser204) antibody.



Western blot analysis of extracts from 3T3 cells, treated with UV (15mins), using PAK1 (Phospho-Ser204) antibody.

For Research Use Only