



PKCB (Phospho-Ser661) Antibody

E11-8169A

Catalog Number: E11-8169A

Concentration: 1mg/ml

Swiss-Prot No.: P05771

Other Names: EC 2.7.11.13; kinase PKC-beta; KPCB; PKC II; PKC-B; PKC-beta; PKC-II; PRKCB; PRKCB1; Protein kinase C, beta type

All Sites: Human: Ser661; Mouse: Ser629; Rat: Ser661

Storage/Stability: Store at -20 °C/1 year

Form of Antibody: Rabbit IgG in phosphate buffered saline (without Mg^{2+} and Ca^{2+}), pH 7.4, 150mM NaCl, 0.02% sodium azide and 50% glycerol.

Immunogen: The antiserum was produced against synthesized phosphopeptide derived from human PKCB around the phosphorylation site of serine 661 (G-F-S^P-Y-T).

Purification: The antibody was affinity-purified from

rabbit antiserum by affinity-chromatography using epitope-specific phosphopeptide. The antibody against non-phosphopeptide was removed by chromatography using non-phosphopeptide corresponding to the phosphorylation site.

Specificity: PKCB (Phospho-Ser661) antibody detects endogenous levels of PKCB only when phosphorylated at serine 661.

Reactivity: Human (Identities = 100%, Positives = 100%);
Mouse (Identities = 100%, Positives = 100%);
Rat (Identities = 100%, Positives = 100%)

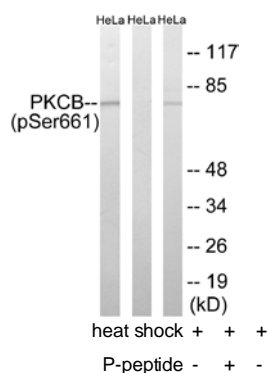
Applications: WB: 1:500~1:1000 ELISA: 1:20000

References:

Coussens L., Science 233:859-866(1986).

Kubo K., FEBS Lett. 223:138-142(1987).

Loftus B.J., Genomics 60:295-308(1999).



Lane 1: The extracts from HeLa cells treated with heat shock using PKCB (Phospho-Ser661) antibody

Lane 2: The extracts from HeLa cells treated with heat shock plus phosphopeptide using PKCB (Phospho-Ser661) antibody

Lane 3: The extracts from HeLa cells treated with heat shock using PKCB (Ab-661) antibody

For Research Use Only