



PKCD (Phospho-Tyr64) Antibody

E11-8171A

Catalog Number: E11-8171A

Concentration: 1mg/ml

Swiss-Prot No.: Q05655

Other Names: kinase PKC-delta; KPCD; nPKC-delta; PKC-delta; PRKCD

All Sites: Human: Tyr64; Mouse: Tyr64; Rat: Tyr64

Storage/Stability: Store at -20 °C/1 year

Form of Antibody: Rabbit IgG in phosphate buffered saline (without Mg²⁺ and Ca²⁺), pH 7.4, 150mM NaCl, 0.02% sodium azide and 50% glycerol.

Immunogen: The antiserum was produced against synthesized phosphopeptide derived from human PKCD around the phosphorylation site of tyrosine 64 (H-I-Y^P-E-G).

Purification: The antibody was affinity-purified from rabbit antiserum by affinity-chromatography using

epitope-specific phosphopeptide. The antibody against non-phosphopeptide was removed by chromatography using non-phosphopeptide corresponding to the phosphorylation site.

Specificity: PKCD (Phospho-Tyr64) antibody detects endogenous levels of PKCD only when phosphorylated at tyrosine 64.

Reactivity: Human (Identities = 100%, Positives = 100%);
Mouse (Identities = 100%, Positives = 100%);
Rat (Identities = 100%, Positives = 100%)

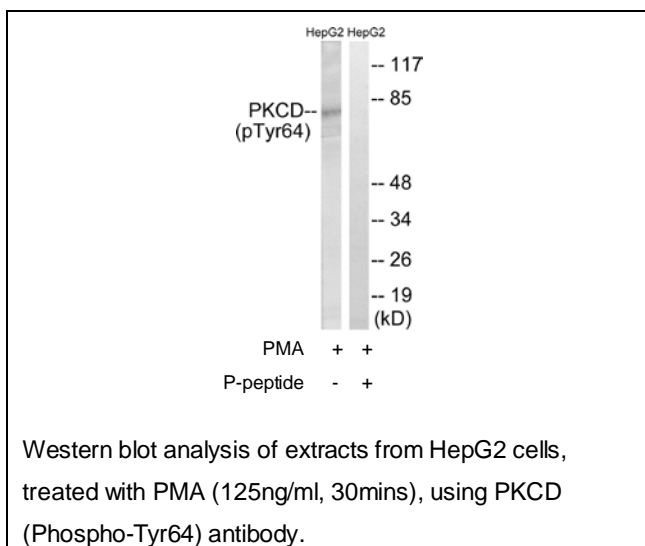
Applications: WB: 1:500~1:1000 ELISA: 1:10000

References:

Aris J.P., Biochim. Biophys. Acta 1174:171-181(1993).

Ota T., Nat. Genet. 36:40-45(2004).

Mural R.J., Submitted (JUL-2005) to the EMBL/GenBank/DDBJ databases.



For Research Use Only