



PLK1 (Phospho-Ser137) Antibody

E11-8175A**Catalog Number:** E11-8175A**Concentration:** 1mg/ml**Swiss-Prot No.:** P53350**Other Names:** Polo-like kinase 1; PLK-1;

Serine/threonine-protein kinase 13; STPK13

All Sites: Human: Ser137; Mouse: Ser137; Rat: Ser137**Storage/Stability:** Store at -20 °C**Form of Antibody:** Rabbit IgG in phosphate buffered saline (without Mg²⁺ and Ca²⁺), pH 7.4, 150mM NaCl, 0.02% sodium azide and 50% glycerol.**Immunogen:** The antiserum was produced against synthesized phosphopeptide derived from human PLK1 around the phosphorylation site of serine 137 (R-R-S^P-L-L).**Purification:** The antibody was affinity-purified from rabbit antiserum by affinity-chromatography using

epitope-specific phosphopeptide. The antibody against non-phosphopeptide was removed by chromatography using non-phosphopeptide corresponding to the phosphorylation site.

Specificity: PLK1 (Phospho-Ser137) antibody detects endogenous levels of PLK1 only when phosphorylated at serine 137.**Reactivity:** Human (Identities = 100%, Positives = 100%);

Mouse (Identities = 100%, Positives = 100%);

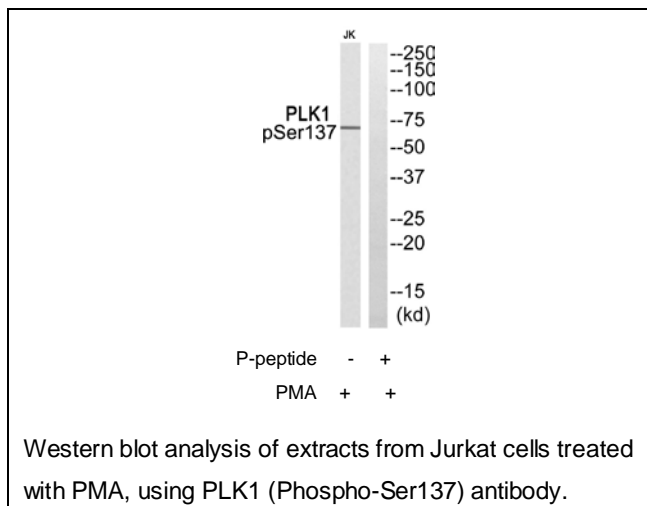
Rat (Identities = 100%, Positives = 100%)

Applications: WB: 1:500~1:1000 ELISA: 1:40000**References:**

Hamanaka R., Cell Growth Differ. 5:249-257(1994).

Lake R.J., Mol. Cell. Biol. 13:7793-7801(1993).

Golsteyn R.M., J. Cell Sci. 107:1509-1517(1994).

**For Research Use Only**