



C-RAF (Phospho-Thr269) Antibody

E11-8177A

Catalog Number: E11-8177A

Concentration: 1mg/ml

Swiss-Prot No.: P04049

Other Names: C-RAF; C-Raf; CRAF; EC 2.7.11.1; kinase Raf1; Protein kinase raf 1; RAF proto-oncogene serine/threonine-protein kinase; Raf proto-oncogene serine/threonine-protein kinase; RAF-1; Raf-1; RAF1; Similar to murine leukemia viral (V-raf-1) oncogene homolog 1

All Sites: Human: Thr269; Mouse: Thr269; Rat: Thr269

Storage/Stability: Store at -20 °C/1 year

Form of Antibody: Rabbit IgG in phosphate buffered saline (without Mg^{2+} and Ca^{2+}), pH 7.4, 150mM NaCl, 0.02% sodium azide and 50% glycerol.

Immunogen: The antiserum was produced against synthesized phosphopeptide derived from human C-RAF around the phosphorylation site of threonine 269 (S-T-T^P-L-P).

Purification: The antibody was affinity-purified from

rabbit antiserum by affinity-chromatography using epitope-specific phosphopeptide. The antibody against non-phosphopeptide was removed by chromatography using non-phosphopeptide corresponding to the phosphorylation site.

Specificity: C-RAF (Phospho-Thr269) antibody detects endogenous levels of C-RAF only when phosphorylated at threonine 269.

Reactivity: Human (Identities = 100%, Positives = 100%);
Mouse (Identities = 92%, Positives = 92%);
Rat (Identities = 100%, Positives = 100%)

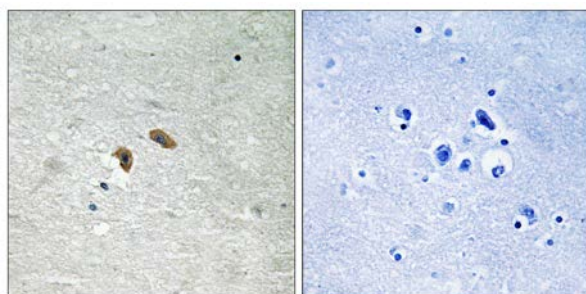
Applications: IHC: 1:50~1:100 ELISA: 1:40000

References:

The MGC Project Team; Genome Res. 14:2121-2127(2004).

Olsen J.V., Cell 127:635-648(2006).

Mott H.R., Proc. Natl. Acad. Sci. U.S.A. 93:8312-8317(1996).

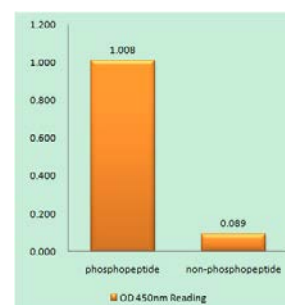


P-peptide

-

+

Immunohistochemistry analysis of paraffin-embedded human brain tissue using C-RAF (Phospho-Thr269) antibody.



C-RAF (Phospho-Thr269) antibody reacts with epitope-specific phosphopeptide and corresponding non-phosphopeptide. The absorbance readings at 450 nM are shown in the ELISA figure.

For Research Use Only