



C-RAF Antibody

E11-8177B

Catalog Number: E11-8177B

Concentration: 1mg/ml

Swiss-Prot No.: P04049

Other Names: EC 2.7.11.1; Raf-1; C-RAF; cRaf

Storage/Stability: Store at -20°C/1 year

Form of Antibody: Rabbit IgG in phosphate buffered saline (without Mg^{2+} and Ca^{2+}), pH 7.4, 150mM NaCl, 0.02% sodium azide and 50% glycerol.

Immunogen: The antiserum was produced against synthesized peptide derived from Internal of human C-RAF.

Purification: The antibody was affinity-purified from rabbit antiserum by affinity-chromatography using

epitope-specific immunogen.

Specificity: C-RAF antibody detects endogenous levels of total C-RAF protein.

Reactivity: Human (Identities = 100%, Positives = 100%);
Mouse (Identities = 92%, Positives = 92%);
Rat (Identities = 100%, Positives = 100%)

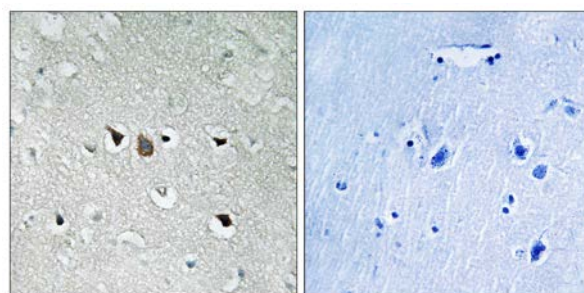
Applications: IHC: 1:50~1:100 ELISA: 1:40000

References:

The MGC Project Team; Genome Res. 14:2121-2127(2004).

Olsen J.V., Cell 127:635-648(2006).

Mott H.R., Proc. Natl. Acad. Sci. U.S.A. 93:8312-8317(1996).



Peptide

-

+

Immunohistochemistry analysis of paraffin-embedded human brain tissue using C-RAF antibody.

For Research Use Only