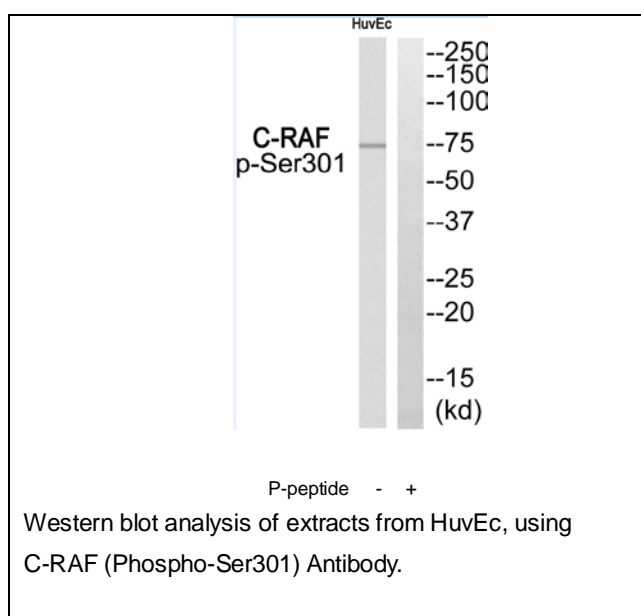




C-RAF (Phospho-Ser301) Antibody

E11-8179A

- Catalog Number:** E11-8179A
- Amount:** 100µg/100µl
- Swiss-Prot No. :** P04049
- All Names:** RAF proto-oncogene serine/threonine-protein kinase
EC=2.7.11.1, Proto-oncogene c-RAF,cRaf, RAF, RAF1
- Form of Antibody:** Rabbit IgG in phosphate buffered saline (without Mg^{2+} and Ca^{2+}), pH 7.4, 150mM NaCl, 0.02% sodium azide and 50% glycerol.
- Storage/Stability:** Store at -20°C/1 year
- Immunogen:** The antiserum was produced against synthesized phosphopeptide derived from human C-RAF around the phosphorylation site of Ser301.
- Purification:** The antibody was affinity-purified from rabbit antiserum by affinity-chromatography using epitope-specific phosphopeptide.
- Specificity/Sensitivity:** C-RAF (Phospho-Ser301) Antibody detects endogenous levels of C-RAF only when phosphorylated at Ser301.
- Reactivity:** H:S301, M:S301, R:S301
- Applications:** WB: 1:500~1:1000 ELISA: 1:10000
- References:** Young A.C., Rapp U.R. Nucleic Acids Res. 14:1009-1015(1986)
Sugano S.Nat. Genet. 36:40-45(2004)
NIEHS SNPs program Submitted (DEC-2007) to the EMBL/GenBank/DDBJ databases

**For Research Use Only**