



RSK1/2/3/4(Phospho-Ser221/227/218/232) Antibody

E11-8182A

Catalog Number: E11-8182A

Concentration: 1mg/ml

Swiss-Prot No.: Q15418/P51812/Q15349/Q9UK32

Other Names: 90 kDa ribosomal protein S6 kinase 1; EC 2.7.11.1; kinase p90RSK1; KS6A1; KS6AA; MAPKAP-K1a; p90-RSK 1; pp90RSK1; Ribosomal protein S6 kinase alpha 1; Ribosomal S6 kinase 1; RPS6KA1; RSK-1; RSK1; S6K-alpha 1

All Sites: Human: Ser221/ Ser227/ Ser218/ Ser232;
Mouse: Ser221/Ser 227/ Ser218/Ser 252

Storage/Stability: Store at -20 °C/1 year

Form of Antibody: Rabbit IgG in phosphate buffered saline (without Mg^{2+} and Ca^{2+}), pH 7.4, 150mM NaCl, 0.02% sodium azide and 50% glycerol.

Immunogen: The antiserum was produced against synthesized phosphopeptide derived from human RSK1/2/3/4 around the phosphorylation site of serine 221/227/218/232 (A-Y-S^P-F-C).

Purification: The antibody was affinity-purified from rabbit antiserum by affinity-chromatography using epitope-specific phosphopeptide. The antibody against non-phosphopeptide was removed by chromatography using non-phosphopeptide corresponding to the phosphorylation site.

Specificity: RSK1/2/3/4 (Phospho-Ser221/227/218/232) antibody detects endogenous levels of RSK1/2/3/4 only when phosphorylated at serine 221/227/218/232.

Reactivity: Human (Identities = 100%, Positives = 100%);
Mouse (Identities = 100%, Positives = 100%)

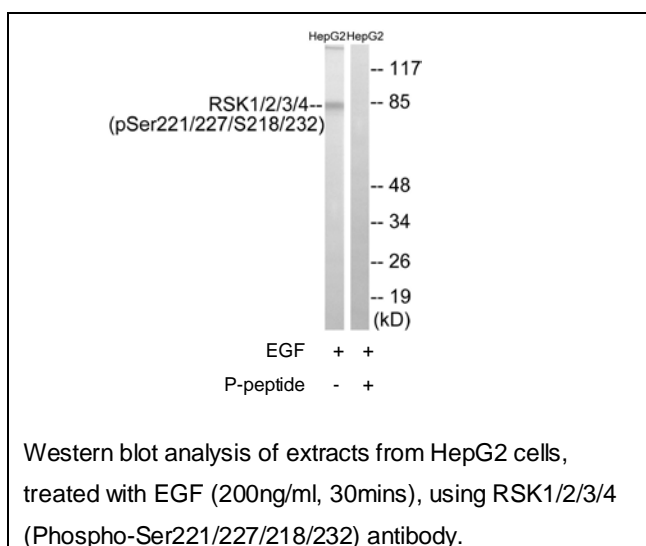
Applications: WB: 1:500~1:1000 ELISA: 1:40000

References:

Moller D.E., Am. J. Physiol. 266:C351-C359(1994).

Gregory S.G., Nature 441:315-321(2006).

The MGC Project Team, Genome Res. 14:2121-2127(2004).



For Research Use Only