



BIM (Phospho-Ser59) Antibody

E11-8206A

Catalog Number: E11-8206A

Concentration: 1mg/ml

Swiss-Prot No.: O43521

Other Names: Bcl-2 related ovarian death protein; BCL2 interacting mediator of cell death; Bcl2 interacting mediator of cell death; BCL2-like protein 11; Bcl2-like protein 11; BCL2L11; BOD

All Sites: Human: Ser59; Mouse: Ser55; Rat: Ser55

Storage/Stability: Store at -20°C/1 year

Form of Antibody: Rabbit IgG in phosphate buffered saline (without Mg^{2+} and Ca^{2+}), pH 7.4, 150mM NaCl, 0.02% sodium azide and 50% glycerol.

Immunogen: The antiserum was produced against synthesized phosphopeptide derived from human BIM around the phosphorylation site of serine 59 (H-G-S^P-P-Q).

Purification: The antibody was affinity-purified from rabbit antiserum by affinity-chromatography using epitope-specific phosphopeptide. The antibody against non-phosphopeptide was removed by chromatography using non-phosphopeptide corresponding to the phosphorylation site.

Specificity: BIM (Phospho-Ser59) antibody detects endogenous levels of BIM only when phosphorylated at serine 59.

Reactivity: Human, Mouse, Rat

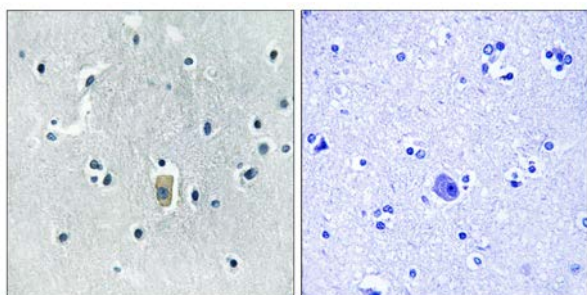
Applications: IHC: 1:50~1:100 ELISA: 1:40000

References:

O'Connor L., EMBO J. 17:384-395(1998).

Mami U., FEBS Lett. 509:135-141(2001).

Liu J.-W., Cancer Res. 62:2976-2981(2002).



P-peptide

-

+

Immunohistochemistry analysis of paraffin-embedded human brain tissue, using BIM (Phospho-Ser59) antibody.

For Research Use Only