



LCK (Phospho-Ser59) Antibody

E11-8215A

Catalog Number: E11-8215A

Concentration: 1mg/ml

Swiss-Prot No.: P06239

Other Names: EC 2.7.10.2; kinase Lck; LCK; LSK; LSK-T; lymphocyte-specific protein tyrosine kinase; P56-LCK; T cell-specific protein-tyrosine kinase

All Sites: Human: Ser59; Mouse: Ser59; Rat: Ser59

Storage/Stability: Store at -20 °C/1 year

Form of Antibody: Rabbit IgG in phosphate buffered saline (without Mg^{2+} and Ca^{2+}), pH 7.4, 150mM NaCl, 0.02% sodium azide and 50% glycerol.

Immunogen: The antiserum was produced against synthesized phosphopeptide derived from human LCK around the phosphorylation site of serine 59 (P-A-S^P-P-L).

Purification: The antibody was affinity-purified from rabbit antiserum by affinity-chromatography using

epitope-specific phosphopeptide. The antibody against non-phosphopeptide was removed by chromatography using non-phosphopeptide corresponding to the phosphorylation site.

Specificity: LCK (Phospho-Ser59) antibody detects endogenous levels of LCK only when phosphorylated at serine 59.

Reactivity: Human (Identities = 100%, Positives = 100%);

Mouse (Identities = 92%, Positives = 92%);

Rat (Identities = 92%, Positives = 92%)

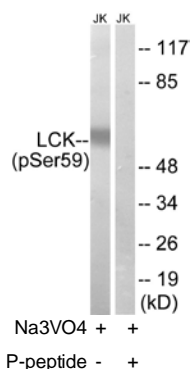
Applications: WB: 1:500~1:1000 ELISA: 1:40000

References:

Koga Y., Eur. J. Immunol. 16:1643-1646(1986).

Perlmutter R.M., J. Cell. Biochem. 38:117-126(1988).

Rouer E., Gene 84:105-113(1989).



Lane 1: The extracts from Jurkat cells treated with IFN (2500U/ML, 30mins) using LCK (Phospho-Ser59) antibody

Lane 2: The extracts from Jurkat cells treated with IFN (2500U/ML, 30mins) plus phosphopeptide using LCK (Phospho-Ser59) antibody

For Research Use Only