



## BL-CAM (Ab-807) Antibody

E11-8230B

**Catalog Number:** E11-8230B

**Concentration:** 1mg/ml

**Swiss-Prot No.:** P20273

**Other Names:** B-cell receptor CD22; B-lymphocyte cell adhesion molecule; BL-CAM; Leu-14; Siglec-2

**Storage/Stability:** Store at -20°C/1 year

**Form of Antibody:** Rabbit IgG in phosphate buffered saline (without  $Mg^{2+}$  and  $Ca^{2+}$ ), pH 7.4, 150mM NaCl, 0.02% sodium azide and 50% glycerol.

**Immunogen:** The antiserum was produced against synthesized non-phosphopeptide derived from human BL-CAM around the phosphorylation site of tyrosine 807

(G-D-Y<sup>P</sup>-E-N).

**Purification:** The antibody was affinity-purified from rabbit antiserum by affinity-chromatography using epitope-specific immunogen.

**Specificity:** BL-CAM (Ab-807) antibody detects endogenous levels of total BL-CAM protein.

**Reactivity:** Human (Identities = 100%, Positives = 100%)

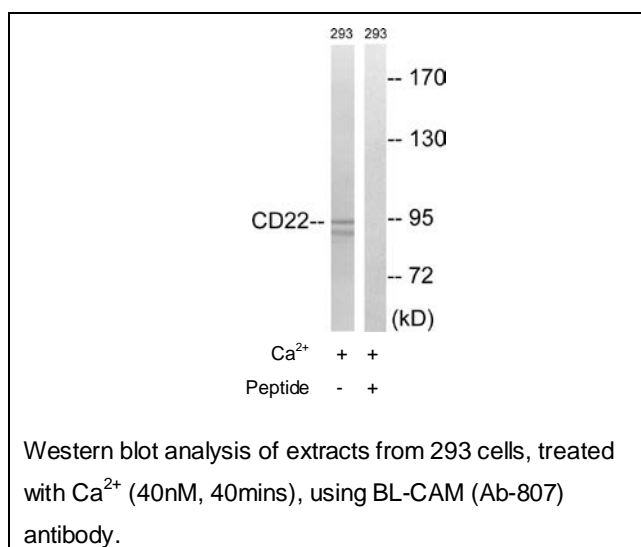
**Applications:** WB: 1:500~1:1000 ELISA: 1:40000

**References:**

Wilson G.L., J. Exp. Med. 173:137-146(1991).

Wilson G.L., J. Immunol. 150:5013-5024(1993).

Stamenkovic I., Nature 345:74-77(1990).



**For Research Use Only**