



GRB2 (Phospho-Ser159) Antibody

E11-8241A

Catalog Number: E11-8241A

Concentration: 1mg/ml

Swiss-Prot No.: Q9UQC2

Other Names: GABJ; GRB2-associated binding protein 2; KIAA0571; pp100

All Sites: Human: Ser159; Mouse: Ser160; Rat: Ser160

Storage/Stability: Store at -20 °C/1 year

Form of Antibody: Rabbit IgG in phosphate buffered saline (without Mg^{2+} and Ca^{2+}), pH 7.4, 150mM NaCl, 0.02% sodium azide and 50% glycerol.

Immunogen: The antiserum was produced against synthesized phosphopeptide derived from human GRB2 around the phosphorylation site of serine 159 (K-S-S^P-A-P).

Purification: The antibody was affinity-purified from rabbit antiserum by affinity-chromatography using

epitope-specific phosphopeptide. The antibody against non-phosphopeptide was removed by chromatography using non-phosphopeptide corresponding to the phosphorylation site.

Specificity: GRB2 (Phospho-Ser159) antibody detects endogenous levels of GRB2 only when phosphorylated at serine 159.

Reactivity: Human (Identities = 100%, Positives = 100%);
Mouse (Identities = 100%, Positives = 100%);
Rat (Identities = 100%, Positives = 100%)

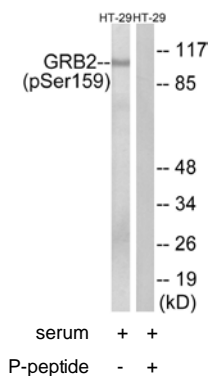
Applications: WB: 1:500~1:1000 ELISA: 1:40000

References:

Nishida K., Blood 93:1809-1816(1999).

Nagase T., DNA Res. 5:31-39(1998).

Taylor T.D., Nature 440:497-500(2006).



Western blot analysis of extracts from HT-29 cells, treated with serum (20%, 15mins), using GRB2 (Phospho-Ser159) antibody.

For Research Use Only