



BCL-XL (Phospho-Thr115) Antibody

E11-8243A**Catalog Number:** E11-8243A**Concentration:** 1mg/ml**Swiss-Prot No.:** Q07817**Other Names:** Apoptosis regulator Bcl-X; Bcl-2-like 1 protein; BCL2L; BCL2L1; BCLX; BCLXL; BCL2L**All Sites:** Human: Thr115; Mouse: Thr115; Rat: Thr115**Storage/Stability:** Store at -20 °C/1 year**Form of Antibody:** Rabbit IgG in phosphate buffered saline (without Mg^{2+} and Ca^{2+}), pH 7.4, 150mM NaCl, 0.02% sodium azide and 50% glycerol.**Immunogen:** The antiserum was produced against synthesized phosphopeptide derived from human BCL-XL around the phosphorylation site of threonine 115 (H-I-T^P-P-G).**Purification:** The antibody was affinity-purified from rabbit antiserum by affinity-chromatography using

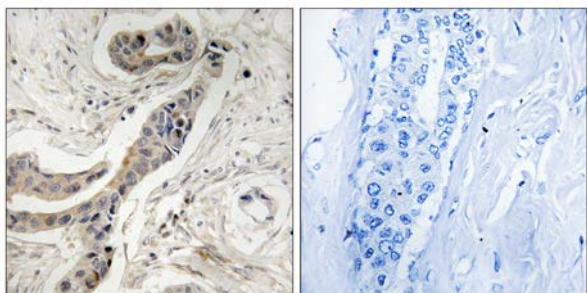
epitope-specific phosphopeptide. The antibody against non-phosphopeptide was removed by chromatography using non-phosphopeptide corresponding to the phosphorylation site.

Specificity: BCL-XL (Phospho-Thr115) antibody detects endogenous levels of BCL-XL only when phosphorylated at threonine 115.**Reactivity:** Human (Identities = 100%, Positives = 100%);
Mouse (Identities = 100%, Positives = 100%);
Rat (Identities = 100%, Positives = 100%)**Applications:** IHC: 1:50~1:100 ELISA: 1:1000**References:**

Boise L.H., Cell 74:597-608(1993).

Ban J., Biochem. Biophys. Res. Commun. 248:147-152(1998).

Deloukas P., Nature 414:865-871(2001).



P-peptide

-

+

Immunohistochemistry analysis of paraffin-embedded human breast carcinoma tissue using BCL-XL (Phospho-Thr115) antibody.

For Research Use Only