



ATR (Phospho-Ser428) Antibody

E11-8270A

Catalog Number: E11-8270A

Concentration: 1mg/ml

Swiss-Prot No.: Q13535

Other Names: ataxia telangiectasia and Rad3-related protein; EC 2.7.11.1; FRAP-related protein; FRP1; kinase ATR; protein kinase ATR

All Sites: Human: Ser428

Storage/Stability: Store at -20°C/1 year

Form of Antibody: Rabbit IgG in phosphate buffered saline (without Mg^{2+} and Ca^{2+}), pH 7.4, 150mM NaCl, 0.02% sodium azide and 50% glycerol.

Immunogen: The antiserum was produced against synthesized phosphopeptide derived from human ATR around the phosphorylation site of serine 428 (G-I-S^P-P-K).

Purification: The antibody was affinity-purified from

rabbit antiserum by affinity-chromatography using epitope-specific phosphopeptide. The antibody against non-phosphopeptide was removed by chromatography using non-phosphopeptide corresponding to the phosphorylation site.

Specificity: ATR (Phospho-Ser428) antibody detects endogenous levels of ATR only when phosphorylated at serine 428.

Reactivity: Human (Identities = 100%, Positives = 100%)

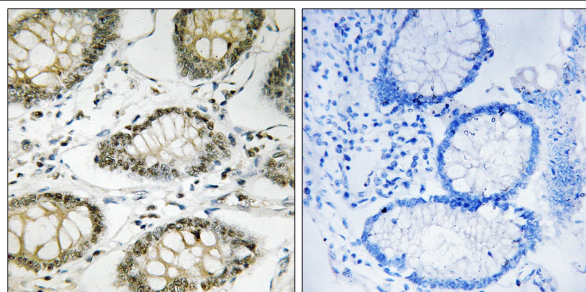
Applications: IHC: 1:50~1:100 ELISA: 1:40000

References:

Bentley N.J., EMBO J. 15:6641-6651(1996).

Cimprich K.A., Proc. Natl. Acad. Sci. U.S.A. 93:2850-2855(1996).

Mannino J.L., Gene 272:35-43(2001).

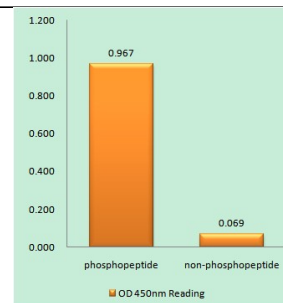


P-peptide

-

+

Immunohistochemistry analysis of paraffin-embedded human colon carcinoma tissue using ATR (Phospho-Ser428) antibody.



ATR (Phospho-Ser428) antibody reacts with epitope-specific phosphopeptide and corresponding non-phosphopeptide. The absorbance readings at 450 nM are shown in the ELISA figure.

For Research Use Only