



Ephrin B1/B2/B3 (Phospho-Tyr324) Antibody

E11-8281A

Catalog Number: E11-8281A

Concentration: 1mg/ml

Swiss-Prot No.: P98172/P52799/Q15768

Other Names: CEK5 ligand; CEK5 receptor ligand; CEK5-L; CEL5-L; EFL-3; EFN1; ELK ligand; ELK-L; EPH-related receptor tyrosine kinase ligand 2; Ephrin-B1 precursor; EPL2; EPLG2; kinase ephrin-B1; LERK-2; LERK2; STRA1; STRA1 protein

All Sites: Human: Tyr324/311/318; Mouse: Tyr323/314/318; Rat: Tyr323/-/318

Storage/Stability: Store at -20°C/1 year

Form of Antibody: Rabbit IgG in phosphate buffered saline (without Mg^{2+} and Ca^{2+}), pH 7.4, 150mM NaCl, 0.02% sodium azide and 50% glycerol.

Immunogen: The antiserum was produced against synthesized phosphopeptide derived from human Ephrin B1/B2/B3 around the phosphorylation site of tyrosine 324 (G-D-Y^P-G-H).

Purification: The antibody was affinity-purified from

rabbit antiserum by affinity-chromatography using

epitope-specific phosphopeptide. The antibody against non-phosphopeptide was removed by chromatography using non-phosphopeptide corresponding to the phosphorylation site.

Specificity: Ephrin B1/B2/B3 (Phospho-Tyr324) antibody detects endogenous levels of Ephrin B1/B2/B3 only when phosphorylated at tyrosine 324.

Reactivity: Human (Identities = 100%, Positives = 100%); Mouse (Identities = 100%, Positives = 100%); Rat (Identities = 100%, Positives = 100%)

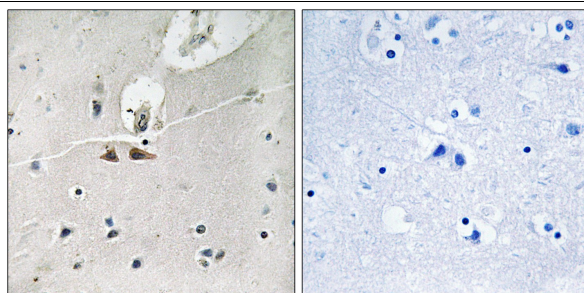
Applications: WB: 1:500~1:1000 IHC: 1:50~1:100 ELISA: 1:20000

References:

[Beckmann M.P.](#), EMBO J. 13:3757-3762(1994).

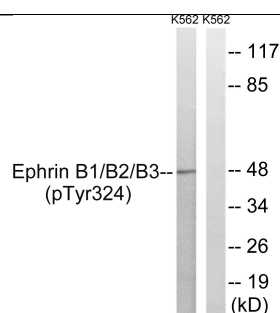
[Davis S.](#), Science 266:816-819(1994).

[Fletcher F.A.](#), Submitted (JAN-1997) to the EMBL/GenBank/DDBJ databases.



P-peptide - +

Immunohistochemistry analysis of paraffin-embedded human brain tissue using Ephrin B1/B2/B3 (Phospho-Tyr324) antibody.



serum + +
P-peptide - +

Western blot analysis of extracts from K562 cells, treated with serum (20%, 15mins), using Ephrin B1/B2/B3 (Phospho-Tyr324) antibody.

For Research Use Only

For Research Use Only