



## 4E-BP1 (Phospho-Thr70) Antibody

E11-8283A

**Catalog Number:** E11-8283A

**Concentration:** 1mg/ml

**Swiss-Prot No.:** Q13541

**Other Names:** 4EBP1; EIF4EBP1; Eukaryotic translation initiation factor 4E binding protein 1; Insulin-stimulated EIF-4E binding protein PHAS-I; P/OKCL.6; PHAS-1; PHAS-I

**All Sites:** Human: Thr70

**Storage/Stability:** Store at -20°C/1 year

**Form of Antibody:** Rabbit IgG in phosphate buffered saline (without  $Mg^{2+}$  and  $Ca^{2+}$ ), pH 7.4, 150mM NaCl, 0.02% sodium azide and 50% glycerol.

**Immunogen:** The antiserum was produced against synthesized phosphopeptide derived from human 4E-BP1 around the phosphorylation site of threonine 70 (T-K-T<sup>P</sup>-P-P).

**Purification:** The antibody was affinity-purified from rabbit antiserum by affinity-chromatography using epitope-specific phosphopeptide. The antibody against non-phosphopeptide was removed by chromatography using non-phosphopeptide corresponding to the phosphorylation site.

**Specificity:** 4E-BP1 (Phospho-Thr70) antibody detects endogenous levels of 4E-BP1 only when phosphorylated at threonine 70.

**Reactivity:** Human (Identities = 100%, Positives = 100%)

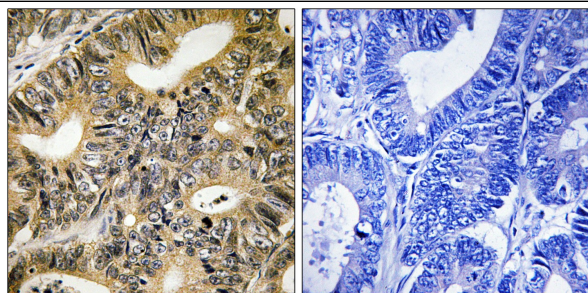
**Applications:** IHC: 1:50~1:100 ELISA: 1:1000

**References:**

Pause A., Nature 371:762-767(1994).

Gevaert K., Nat. Biotechnol. 21:566-569(2003).

Haghighat A., EMBO J. 14:5701-5709(1995).



P-peptide      -                      +

Immunohistochemistry analysis of paraffin-embedded human colon carcinoma tissue using 4E-BP1 (Phospho-Thr70) antibody.

**For Research Use Only**