



4E-BP1 Antibody

E11-8283B

Catalog Number: E11- 8283B

Concentration: 1mg/ml

Swiss-Prot No.: Q13541

Other Names: 4EBP1; EIF4EBP1; Eukaryotic translation initiation factor 4E binding protein 1; Insulin-stimulated EIF-4E binding protein PHAS-I; P/OKCL.6; PHAS-1; PHAS-I

Storage/Stability: Store at -20°C/1 year

Form of Antibody: Rabbit IgG in phosphate buffered saline (without Mg^{2+} and Ca^{2+}), pH 7.4, 150mM NaCl, 0.02% sodium azide and 50% glycerol.

Immunogen: The antiserum was produced against synthesized peptide derived from Internal of human

4E-BP1.

Purification: The antibody was affinity-purified from rabbit antiserum by affinity-chromatography using epitope-specific immunogen.

Specificity: 4E-BP1 antibody detects endogenous levels of total 4E-BP1 protein.

Reactivity: Human (Identities = 100%, Positives = 100%)

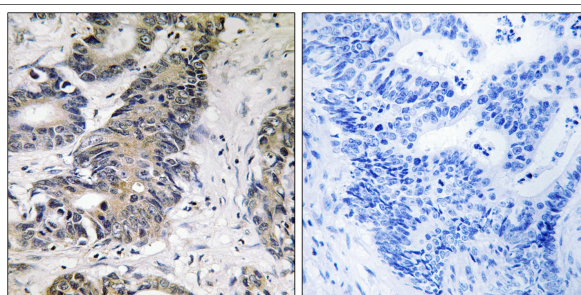
Applications: IHC: 1:50~1:100 ELISA: 1:40000

References:

Pause A., Nature 371:762-767(1994).

Gevaert K., Nat. Biotechnol. 21:566-569(2003).

Haghighat A., EMBO J. 14:5701-5709(1995).



Peptide - +

Immunohistochemistry analysis of paraffin-embedded human colon carcinoma tissue using 4E-BP1 antibody.

For Research Use Only