



ATRIP (Phospho-Ser224) Antibody

E11-8295A

Catalog Number: E11-8295A

Concentration: 1mg/ml

Swiss-Prot No.: Q8WXE1

Other Names: ATIP; ATM and Rad3 related interacting protein; ATR-interacting protein

All Sites: Human: Ser224

Storage/Stability: Store at -20°C/1 year

Form of Antibody: Rabbit IgG in phosphate buffered saline (without Mg²⁺ and Ca²⁺), pH 7.4, 150mM NaCl, 0.02% sodium azide and 50% glycerol.

Immunogen: The antiserum was produced against synthesized phosphopeptide derived from human ATRIP around the phosphorylation site of serine 224 (H-V-S^P-P-R).

Purification: The antibody was affinity-purified from rabbit antiserum by affinity-chromatography using

epitope-specific phosphopeptide. The antibody against non-phosphopeptide was removed by chromatography using non-phosphopeptide corresponding to the phosphorylation site.

Specificity: ATRIP (Phospho-Ser224) antibody detects endogenous levels of ATRIP only when phosphorylated at serine 224.

Reactivity: Human (Identities = 100%, Positives = 100%)

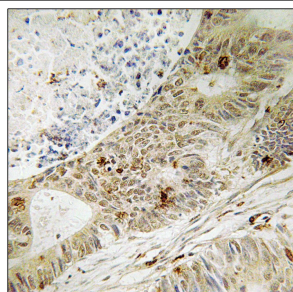
Applications: WB: 1:500~1:1000 IHC: 1:50~1:100
ELISA: 1:10000

References:

[Cortez D., Science 294:1713-1716\(2001\).](#)

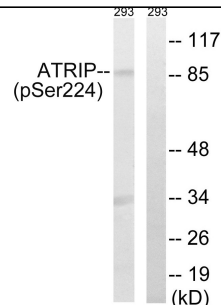
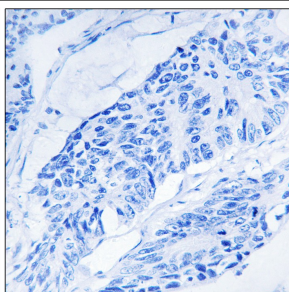
[Ota T., Nat. Genet. 36:40-45\(2004\).](#)

[Mural R.J., Submitted \(JUL-2005\) to the EMBL/GenBank/DDBJ databases.](#)



P-peptide - +

Immunohistochemistry analysis of paraffin-embedded human colon carcinoma tissue, using ATRIP (Phospho-Ser224) antibody.



UV + +
P-peptide - +

Western blot analysis of extracts from 292 cells, treated with UV (15mins), using ATRIP (Phospho-Ser224) antibody.

For Research Use Only