



Bax (Phospho-Ser184) Antibody

E11-8297A

Catalog Number: E11-8297A

Concentration: 100µl, 1mg/ml

Swiss-Prot No.: Q07812

Other Names: Apoptosis regulator BAX, membrane isoform alpha; BAXA; Bcl2-associated X protein

All Sites: Human: Ser184; Mouse: Ser184; Rat: Ser184

Storage/Stability: Store at -20°C/1 year

Form of Antibody: Rabbit IgG in phosphate buffered saline (without Mg²⁺ and Ca²⁺), pH 7.4, 150mM NaCl, 0.02% sodium azide and 50% glycerol.

Immunogen: The antiserum was produced against synthesized phosphopeptide derived from human Bax around the phosphorylation site of serine 184 (T-A-S^P-L-T).

Purification: The antibody was affinity-purified from rabbit antiserum by affinity-chromatography using epitope-specific phosphopeptide. The antibody against

non-phosphopeptide was removed by chromatography using non-phosphopeptide corresponding to the phosphorylation site.

Specificity: Bax (Phospho-Ser184) antibody detects endogenous levels of Bax only when phosphorylated at serine 184.

Reactivity: Human (Identities = 100%, Positives = 100%); Mouse (Identities = 100%, Positives = 100%); Rat (Identities = 100%, Positives = 100%)

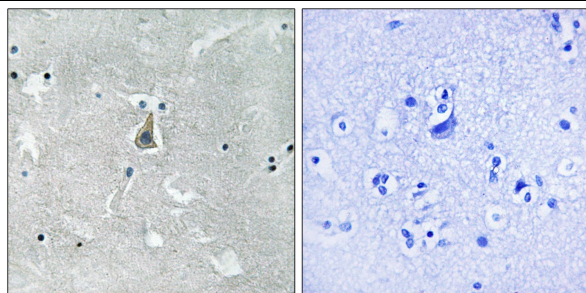
Applications: IHC: 1:50~1:100 ELISA: 1:10000

References:

Oltvai Z.N., Cell 74:609-619(1993).

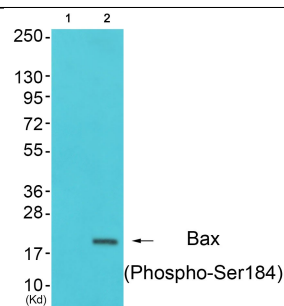
Apte S.S., Genomics 26:592-594(1995).

Shi B., Biochem. Biophys. Res. Commun. 254:779-785(1999).



P-peptide - +

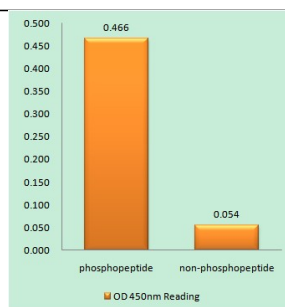
Immunohistochemistry analysis of paraffin-embedded human brain tissue, using Bax (Phospho-Ser184) antibody.



P-peptide + -

Western blot analysis of extracts from K562 cells, using Bax (Phospho-Ser184) antibody.

For Research Use Only



Bax (Phospho-Ser184) antibody reacts with epitope-specific phosphopeptide and corresponding non-phosphopeptide. The absorbance readings at 450 nM are shown in the ELISA figure.