



Bcl-6 (Phospho-Ser333) Antibody

E11-8299A

Catalog Number: E11-8299A

Concentration: 1mg/ml

Swiss-Prot No.: P41182

Other Names: B-cell CLL/lymphoma 6; B-cell lymphoma 6 protein; B-cell lymphoma 6 protein homolog; Bcl-5; Bcl5; Bcl6; LAZ-3 protein; LAZ3; Zinc finger protein 51; ZNF51

All Sites: Human: Ser333; Mouse: Ser334; Rat: Ser334

Storage/Stability: Store at -20°C/1 year

Form of Antibody: Rabbit IgG in phosphate buffered saline (without Mg²⁺ and Ca²⁺), pH 7.4, 150mM NaCl, 0.02% sodium azide and 50% glycerol.

Immunogen: The antiserum was produced against synthesized phosphopeptide derived from human Bcl-6 around the phosphorylation site of serine 333 (P-Q-S^P-P-Q).

Purification: The antibody was affinity-purified from

rabbit antiserum by affinity-chromatography using epitope-specific phosphopeptide. The antibody against non-phosphopeptide was removed by chromatography using non-phosphopeptide corresponding to the phosphorylation site.

Specificity: Bcl-6 (Phospho-Ser333) antibody detects endogenous levels of Bcl-6 only when phosphorylated at serine 333.

Reactivity: Human (Identities = 100%, Positives = 100%); Mouse (Identities = 100%, Positives = 100%);

Rat (Identities = 100%, Positives = 100%)

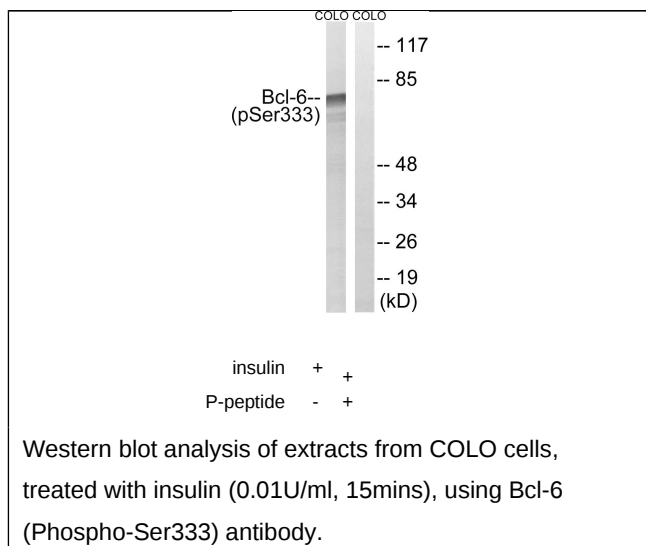
Applications: WB: 1:500~1:1000 ELISA: 1:1000

References:

[Kerckaert J.-P., Nat. Genet. 5:66-70\(1993\).](#)

[Ye B.H., Science 262:747-750\(1993\).](#)

[Miki T., Blood 83:26-32\(1994\).](#)



For Research Use Only