



BRCA1 (Phospho-Ser1457) Antibody

E11-8306A

Catalog Number: E11-8306A

Concentration: 1mg/ml

Swiss-Prot No.: P38398

Other Names: BRCA1; Breast cancer type 1 susceptibility protein; familial breast/ovarian cancer gene 1

All Sites: Human: Ser1457

Storage/Stability: Store at -20°C/1 year

Form of Antibody: Rabbit IgG in phosphate buffered saline (without Mg²⁺ and Ca²⁺), pH 7.4, 150mM NaCl, 0.02% sodium azide and 50% glycerol.

Immunogen: The antiserum was produced against synthesized phosphopeptide derived from human BRCA1 around the phosphorylation site of serine 1457 (L-T-S^P-Q-K).

Purification: The antibody was affinity-purified from rabbit antiserum by affinity-chromatography using epitope-specific phosphopeptide. The antibody against non-phosphopeptide was removed by chromatography using non-phosphopeptide corresponding to the phosphorylation site.

Specificity: BRCA1 (Phospho-Ser1457) antibody detects endogenous levels of BRCA1 only when phosphorylated at serine 1457.

Reactivity: Human (Identities = 100%, Positives = 100%)

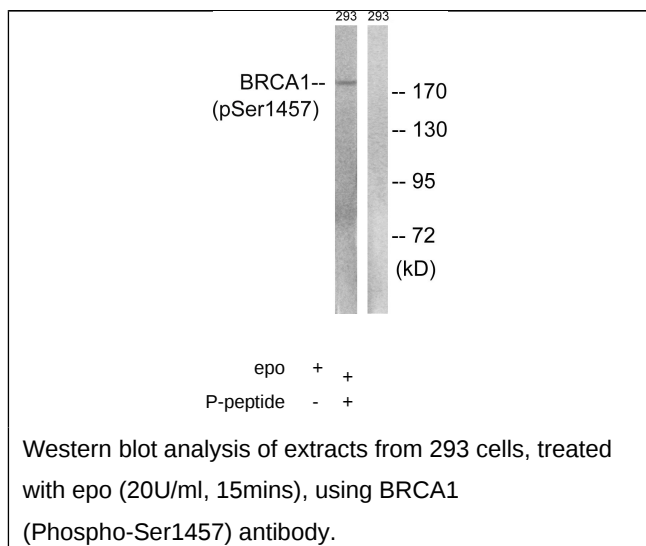
Applications: WB: 1:500~1:1000 ELISA: 1:1000

References:

[Miki Y.](#), Science 266:66-71(1994).

[Smith T.M.](#), Genome Res. 6:1029-1049(1996).

[Wilson C.A.](#), Oncogene 14:1-16(1997).



For Research Use Only