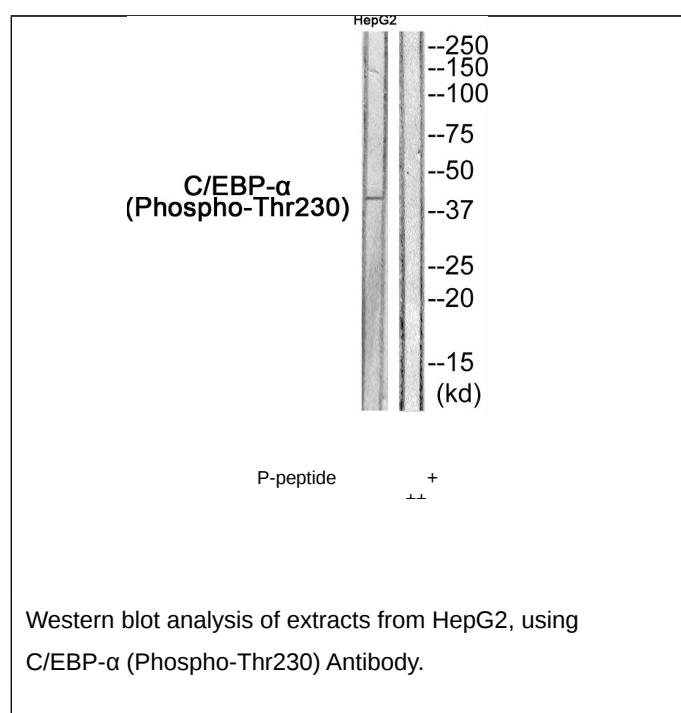




## C/EBP- $\alpha$ (Phospho-Thr230) Antibody

E11-8307A

- Catalog Number:** E11-8307A  
**Amount:** 100 $\mu$ g/100 $\mu$ l  
**Swiss-Prot No. :** P49715  
**All Names:** CCAAT/enhancer-binding protein alpha C/EBP alpha CEBPA  
**Form of Antibody:** Rabbit IgG in phosphate buffered saline (without Mg<sup>2+</sup> and Ca<sup>2+</sup>), pH 7.4, 150mM NaCl, 0.02% sodium azide and 50% glycerol.  
**Storage/Stability:** Store at -20°C/1 year  
**Immunogen:** The antiserum was produced against synthesized phosphopeptide derived from human C/EBP- $\alpha$  around the phosphorylation site of Thr230.  
**Purification:** The antibody was affinity-purified from rabbit antiserum by affinity-chromatography using epitope-specific phosphopeptide.  
**Specificity/Sensitivity:** C/EBP- $\alpha$  (Phospho-Thr230) Antibody detects endogenous levels of C/EBP- $\alpha$  only when phosphorylated at Thr230.  
**Reactivity:** H:T230, M:T226, R:T226  
**Applications:** WB: 1:500~1:1000 ELISA: 1:10000  
**References:** Xanthopoulos K.G. Biochem. Biophys. Res. Commun. 215:106-113(1995)  
Schalwijk J. Biol. Chem. Hoppe-Seyler 378:373-379(1997)  
SeattleSNPs variation discovery resource Submitted (JUL-2007) to the EMBL/GenBank/DDBJ databases



**For Research Use Only**

**For Research Use Only**