



## CAD (Phospho-Thr456) Antibody

E11-8308A

**Catalog Number:** E11-8308A

**Concentration:** 1mg/ml

**Swiss-Prot No.:** P27708

**Other Names:** CAD protein; EC 2.1.3.2; EC 3.5.2.3; EC 6.3.5.5; glutamine-dependent carbamoyl-phosphate synthase; PYR1

**All Sites:** Human: Thr456; Mouse: Thr456

**Storage/Stability:** Store at -20°C/1 year

**Form of Antibody:** Rabbit IgG in phosphate buffered saline (without  $Mg^{2+}$  and  $Ca^{2+}$ ), pH 7.4, 150mM NaCl, 0.02% sodium azide and 50% glycerol.

**Immunogen:** The antiserum was produced against synthesized phosphopeptide derived from human CAD around the phosphorylation site of threonine 456 (P-I-T<sup>P</sup>-P-H).

**Purification:** The antibody was affinity-purified from

rabbit antiserum by affinity-chromatography using

epitope-specific phosphopeptide. The antibody against non-phosphopeptide was removed by chromatography using non-phosphopeptide corresponding to the phosphorylation site.

**Specificity:** CAD (Phospho-Thr456) antibody detects endogenous levels of CAD only when phosphorylated at threonine 456.

**Reactivity:** Human (Identities = 100%, Positives = 100%); Mouse (Identities = 91%, Positives = 100%)

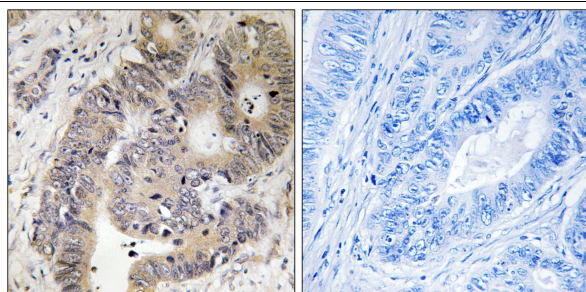
**Applications:** IHC: 1:50~1:100 ELISA: 1:5000

### References:

Iwahana H., Biochem. Biophys. Res. Commun. 219:249-255(1996).

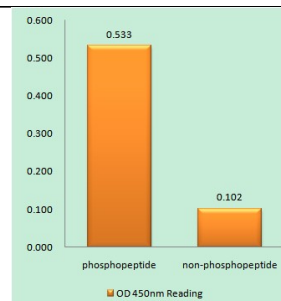
Davidson J.N., DNA Cell Biol. 9:667-676(1990).

Olsen J.V., Cell 127:635-648(2006).



P-peptide - +

Immunohistochemistry analysis of paraffin-embedded human colon carcinoma tissue using CAD (Phospho-Thr456) antibody.



CAD (Phospho-Thr456) antibody reacts with epitope-specific phosphopeptide and corresponding non-phosphopeptide. The absorbance readings at 450 nM are shown in the ELISA figure.

**For Research Use Only**