



## CAD Antibody

E11-8308B

**Catalog Number:** E11-8308B

**Concentration:** 1mg/ml

**Swiss-Prot No.:** P27708

**Other Names:** CAD protein; EC 2.1.3.2; EC 3.5.2.3; EC 6.3.5.5; glutamine-dependent carbamoyl-phosphate synthase; PYR1

**Storage/Stability:** Store at -20°C/1 year

**Form of Antibody:** Rabbit IgG in phosphate buffered saline (without  $Mg^{2+}$  and  $Ca^{2+}$ ), pH 7.4, 150mM NaCl, 0.02% sodium azide and 50% glycerol.

**Immunogen:** The antiserum was produced against synthesized peptide derived from Internal of human CAD.

**Purification:** The antibody was affinity-purified from rabbit antiserum by affinity-chromatography using

epitope-specific immunogen.

**Specificity:** CAD antibody detects endogenous levels of total CAD protein.

**Reactivity:** Human (Identities = 100%, Positives = 100%);

Mouse (Identities = 91%, Positives = 100%)

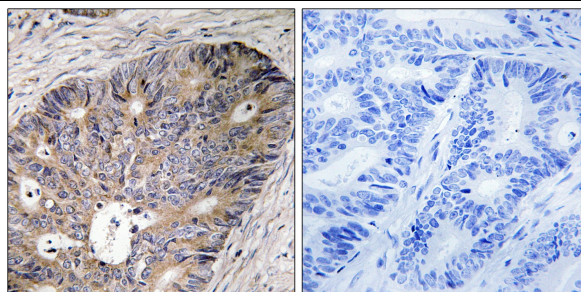
**Applications:** IHC: 1:50~1:100 ELISA: 1:20000

**References:**

Iwahana H., Biochem. Biophys. Res. Commun. 219:249-255(1996).

Davidson J.N., DNA Cell Biol. 9:667-676(1990).

Olsen J.V., Cell 127:635-648(2006).



Peptide - +

Immunohistochemistry analysis of paraffin-embedded human colon carcinoma tissue using CAD antibody.

**For Research Use Only**