



Caldesmon (Phospho-Ser759) Antibody

E11-8309A

Catalog Number: E11-8309A

Concentration: 1mg/ml

Swiss-Prot No.: Q05682

Other Names: CAD; CALD1; CDM; L-caldesmon;
Non-muscle caldesmon

All Sites: Human: Ser759; Mouse: Ser496; Rat: Ser497

Storage/Stability: Store at -20°C/1 year

Form of Antibody: Rabbit IgG in phosphate buffered saline (without Mg^{2+} and Ca^{2+}), pH 7.4, 150mM NaCl, 0.02% sodium azide and 50% glycerol.

Immunogen: The antiserum was produced against synthesized phosphopeptide derived from human Caldesmon around the phosphorylation site of serine 759 (N-K-S^P-P-A).

Purification: The antibody was affinity-purified from rabbit antiserum by affinity-chromatography using

epitope-specific phosphopeptide. The antibody against non-phosphopeptide was removed by chromatography using non-phosphopeptide corresponding to the phosphorylation site.

Specificity: Caldesmon (Phospho-Ser759) antibody detects endogenous levels of Caldesmon only when phosphorylated at serine 759.

Reactivity: Human, Mouse, Rat

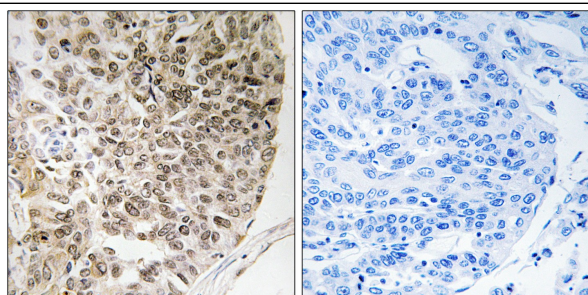
Applications: IHC: 1:50~1:100 ELISA: 1:10000

References:

Novy R.E., J. Biol. Chem. 266:16917-16924(1991).

Humphrey M.B., Gene 112:197-204(1992).

Hayashi K., Proc. Natl. Acad. Sci. U.S.A. 89:12122-12126(1992).



P-peptide

-

+

Immunohistochemistry analysis of paraffin-embedded human lung carcinoma tissue, using Caldesmon (Phospho-Ser759) antibody.

For Research Use Only