



Claudin 3 (Phospho-Tyr219) Antibody

E11-8317A

Catalog Number: E11-8317A

Concentration: 1mg/ml

Swiss-Prot No.: O15551

Other Names: CLD3; CLDN3; Clostridium perfringens enterotoxin receptor 2; CPE-R 2; CPE-receptor 2; HRVP1; Ventral prostate 1 protein homolog

All Sites: Human: Tyr219

Storage/Stability: Store at -20°C/1 year

Form of Antibody: Rabbit IgG in phosphate buffered saline (without Mg²⁺ and Ca²⁺), pH 7.4, 150mM NaCl, 0.02% sodium azide and 50% glycerol.

Immunogen: The antiserum was produced against synthesized phosphopeptide derived from human Claudin 3 around the phosphorylation site of tyrosine 219 (R-K-D-Y^P-V).

Purification: The antibody was affinity-purified from

rabbit antiserum by affinity-chromatography using epitope-specific phosphopeptide. The antibody against non-phosphopeptide was removed by chromatography using non-phosphopeptide corresponding to the phosphorylation site.

Specificity: Claudin 3 (Phospho-Tyr219) antibody detects endogenous levels of Claudin 3 only when phosphorylated at tyrosine 219.

Reactivity: Human (Identities = 100%, Positives = 100%)

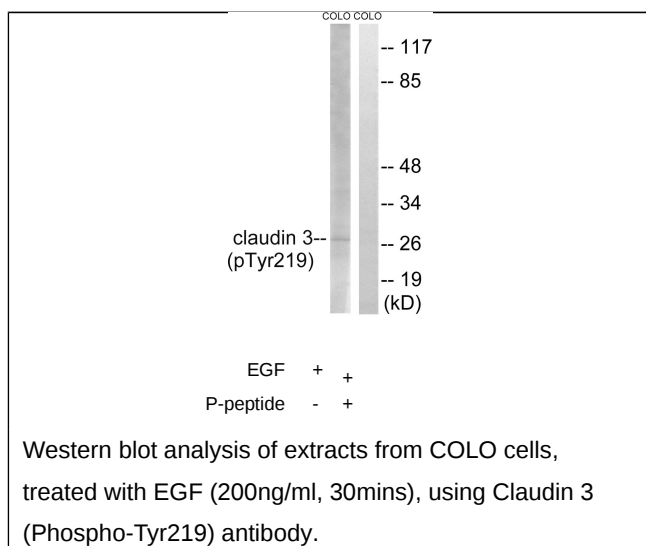
Applications: WB: 1:500~1:1000 ELISA: 1:1000

References:

Peacock R.E., Genomics 46:443-449(1997).

Katahira J., J. Biol. Chem. 272:26652-26658(1997).

The MGC Project Team; Genome Res. 14:2121-2127(2004).



For Research Use Only