



Claudin 7 (Ab-210) Antibody

E11-8321B

Catalog Number: E11-8321B

Concentration: 1mg/ml

Swiss-Prot No.: O95471

Other Names: CEPTRL2; claudin 7; claudin 9; claudin-1; claudin-7; CLD7; CLDN-7; CLDN7; clostridium perfringens enterotoxin receptor-like 2; CPETRL2

Storage/Stability: Store at -20°C/1 year

Form of Antibody: Rabbit IgG in phosphate buffered saline (without Mg^{2+} and Ca^{2+}), pH 7.4, 150mM NaCl, 0.02% sodium azide and 50% glycerol.

Immunogen: The antiserum was produced against synthesized non-phosphopeptide derived from human Claudin 7 around the phosphorylation site of tyrosine 210 (S-K-E-Y^P-V).

Purification: The antibody was affinity-purified from rabbit antiserum by affinity-chromatography using epitope-specific immunogen.

Specificity: Claudin 7 (Ab-210) antibody detects endogenous levels of total Claudin 7 protein.

Reactivity: Human (Identities = 100%, Positives = 100%); Mouse (Identities = 100%, Positives = 100%); Rat (Identities = 100%, Positives = 100%)

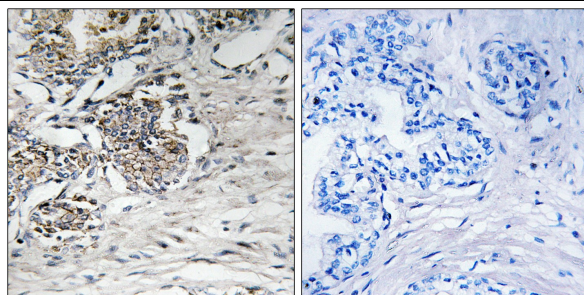
Applications: WB: 1:500~1:1000 IHC: 1:50~1:100 ELISA: 1:10000

References:

Keen T.J.; Submitted (SEP-1998) to the EMBL/GenBank/DDBJ databases.

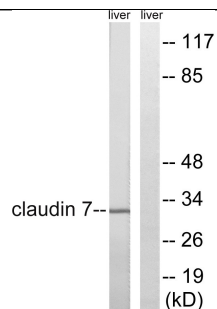
Kalnine N., Submitted (MAY-2003) to the EMBL/GenBank/DDBJ databases.

The MGC Project Team; Genome Res. 14:2121-2127(2004).



Peptide - +

Immunohistochemistry analysis of paraffin-embedded human prostate carcinoma tissue using Claudin 7 (Ab-210) antibody.



Peptide - +

Western blot analysis of extracts from rat liver cells, using Claudin 7 (Ab-210) antibody.

For Research Use Only