



COPS1 Antibody

E11-8322B

Catalog Number: E11- 8322B

Concentration: 1mg/ml

Swiss-Prot No.: Q13098

Other Names: COP9 signalosome complex subunit 1; CSN1; G protein pathway suppressor 1; GPS1; GPS1 protein; MFH protein

Storage/Stability: Store at -20°C/1 year

Form of Antibody: Rabbit IgG in phosphate buffered saline (without Mg^{2+} and Ca^{2+}), pH 7.4, 150mM NaCl, 0.02% sodium azide and 50% glycerol.

Immunogen: The antiserum was produced against synthesized peptide derived from Internal of human COPS1.

Purification: The antibody was affinity-purified from

rabbit antiserum by affinity-chromatography using epitope-specific immunogen.

Specificity: COPS1 antibody detects endogenous levels of total COPS1 protein.

Reactivity: Human (Identities = 100%, Positives = 100%);

Mouse (Identities = 100%, Positives = 100%);

Rat (Identities = 100%, Positives = 100%)

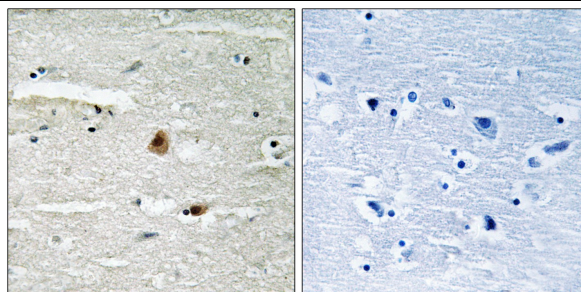
Applications: IHC: 1:50~1:100 ELISA: 1:20000

References:

Spain B.H., Mol. Cell. Biol. 16:6698-6706(1996).

Ota T., Nat. Genet. 36:40-45(2004).

Seeger M., FASEB J. 12:469-478(1998).



Peptide - +

Immunohistochemistry analysis of paraffin-embedded human brain tissue using COPS1 antibody.

For Research Use Only