



## Cyclin C (Phospho-Ser275) Antibody

E11-8334A

**Catalog Number:** E11-8334A

**Concentration:** 1mg/ml

**Swiss-Prot No.:** P24863

**Other Names:** CG1C; cyclin C; SRB11

**All Sites:** Human: Ser275; Mouse: Ser275; Rat: Ser270

**Storage/Stability:** Store at -20°C/1 year

**Form of Antibody:** Rabbit IgG in phosphate buffered saline (without Mg<sup>2+</sup> and Ca<sup>2+</sup>), pH 7.4, 150mM NaCl, 0.02% sodium azide and 50% glycerol.

**Immunogen:** The antiserum was produced against synthesized phosphopeptide derived from human Cyclin C around the phosphorylation site of serine 275 (N-G-S<sup>P</sup>-Q-N).

**Purification:** The antibody was affinity-purified from rabbit antiserum by affinity-chromatography using epitope-specific phosphopeptide. The antibody against

non-phosphopeptide was removed by chromatography using non-phosphopeptide corresponding to the phosphorylation site.

**Specificity:** Cyclin C (Phospho-Ser275) antibody detects endogenous levels of Cyclin C only when phosphorylated at serine 275.

**Reactivity:** Human (Identities = 100%, Positives = 100%); Mouse (Identities = 100%, Positives = 100%); Rat (Identities = 100%, Positives = 100%)

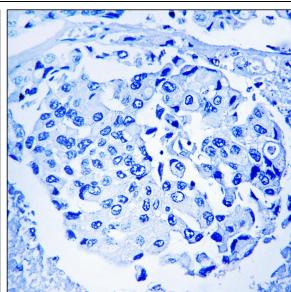
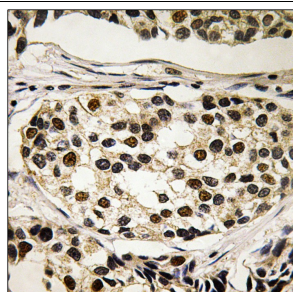
**Applications:** WB: 1:500~1:1000 IHC: 1:50~1:100  
ELISA: 1:1000

### References:

Lew D.J., Cell 66:1197-1206(1991).

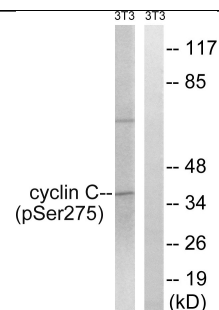
Li H., Genomics 32:253-259(1996).

Mungall A.J., Nature 425:805-811(2003).



P-peptide - +

Immunohistochemistry analysis of paraffin-embedded human breast carcinoma tissue using Cyclin C (Phospho-Ser275) antibody.



UV + +  
P-peptide - +

Western blot analysis of extracts from 3T3 cells, treated with UV (15mins), using Cyclin C (Phospho-Ser275) antibody.

**For Research Use Only**