



## Cyclin C (Ab-275) Antibody

E11-8334B

**Catalog Number:** E11-8334B

**Concentration:** 1mg/ml

**Swiss-Prot No.:** P24863

**Other Names:** CG1C; cyclin C; SRB11

**Storage/Stability:** Store at -20°C/1 year

**Form of Antibody:** Rabbit IgG in phosphate buffered saline (without  $Mg^{2+}$  and  $Ca^{2+}$ ), pH 7.4, 150mM NaCl, 0.02% sodium azide and 50% glycerol.

**Immunogen:** The antiserum was produced against synthesized non-phosphopeptide derived from human Cyclin C around the phosphorylation site of serine 275 (N-G-S<sup>P</sup>-Q-N).

**Purification:** The antibody was affinity-purified from rabbit antiserum by affinity-chromatography using

epitope-specific immunogen.

**Specificity:** Cyclin C (Ab-275) antibody detects endogenous levels of total Cyclin C protein.

**Reactivity:** Human (Identities = 100%, Positives = 100%); Mouse (Identities = 100%, Positives = 100%);  
Rat (Identities = 100%, Positives = 100%)

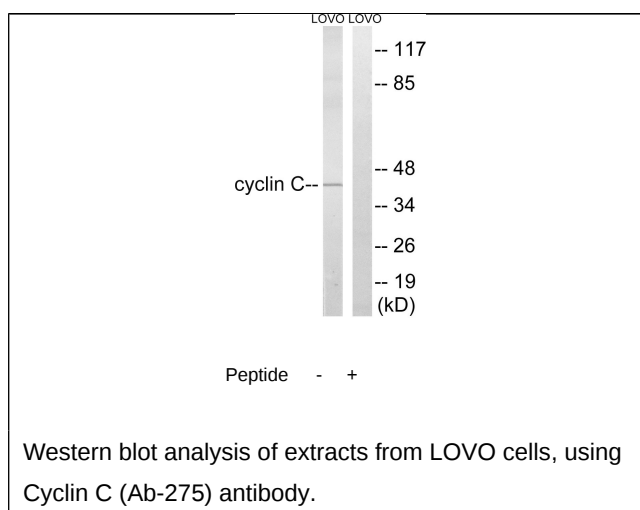
**Applications:** WB: 1:500~1:1000 ELISA: 1:1000

**References:**

Lew D.J., Cell 66:1197-1206(1991).

Li H., Genomics 32:253-259(1996).

Mungall A.J., Nature 425:805-811(2003).



**For Research Use Only**