



Cyclin D2 (Phospho-Thr280) Antibody

E11-8336A

Catalog Number: E11-8336A

Concentration: 1mg/ml

Swiss-Prot No.: P30279

Other Names: cyclin D2; G1/S-specific cyclin D2

All Sites: Human: Thr280; Mouse: Thr279; Rat: Thr279

Storage/Stability: Store at -20°C/1 year

Form of Antibody: Rabbit IgG in phosphate buffered saline (without Mg²⁺ and Ca²⁺), pH 7.4, 150mM NaCl, 0.02% sodium azide and 50% glycerol.

Immunogen: The antiserum was produced against synthesized phosphopeptide derived from human Cyclin D2 around the phosphorylation site of threonine 280 (A-S-T^P-P-T).

Purification: The antibody was affinity-purified from rabbit antiserum by affinity-chromatography using epitope-specific phosphopeptide. The antibody against

non-phosphopeptide was removed by chromatography using non-phosphopeptide corresponding to the phosphorylation site.

Specificity: Cyclin D2 (Phospho-Thr280) antibody detects endogenous levels of Cyclin D2 only when phosphorylated at threonine 280.

Reactivity: Human (Identities = 100%, Positives = 100%); Mouse (Identities = 90%, Positives = 100%); Rat (Identities = 90%, Positives = 100%)

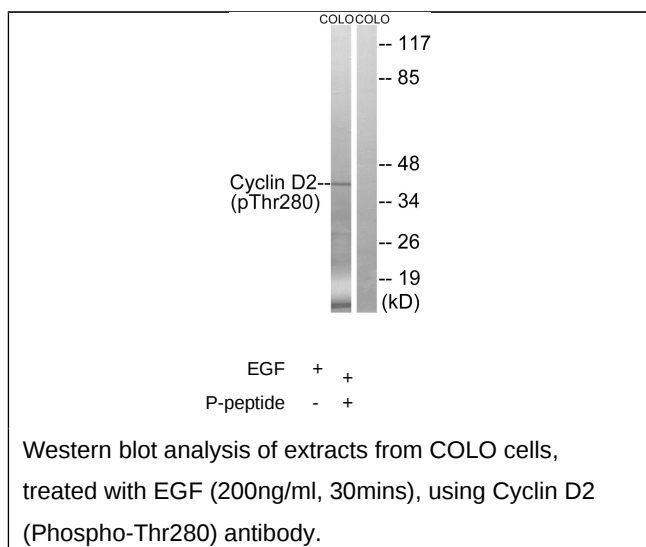
Applications: WB: 1:500~1:1000 ELISA: 1:1000

References:

Xiong Y., *Genomics* 13:575-584(1992).

Palmero I., *Oncogene* 8:1049-1054(1993).

Kalnina N., Submitted (OCT-2004) to the EMBL/GenBank/DDBJ databases.



For Research Use Only