



Cyclin D2 (Ab-280) Antibody

E11-8336B

Catalog Number: E11-8336B

Concentration: 1mg/ml

Swiss-Prot No.: P30279

Other Names: cyclin D2; G1/S-specific cyclin D2

Storage/Stability: Store at -20°C/1 year

Form of Antibody: Rabbit IgG in phosphate buffered saline (without Mg^{2+} and Ca^{2+}), pH 7.4, 150mM NaCl, 0.02% sodium azide and 50% glycerol.

Immunogen: The antiserum was produced against synthesized non-phosphopeptide derived from human Cyclin D2 around the phosphorylation site of threonine 280 (A-S-T^P-P-T).

Purification: The antibody was affinity-purified from rabbit antiserum by affinity-chromatography using

epitope-specific immunogen.

Specificity: Cyclin D2 (Ab-280) antibody detects endogenous levels of total Cyclin D2 protein.

Reactivity: Human (Identities = 100%, Positives = 100%); Mouse (Identities = 90%, Positives = 100%); Rat (Identities = 90%, Positives = 100%)

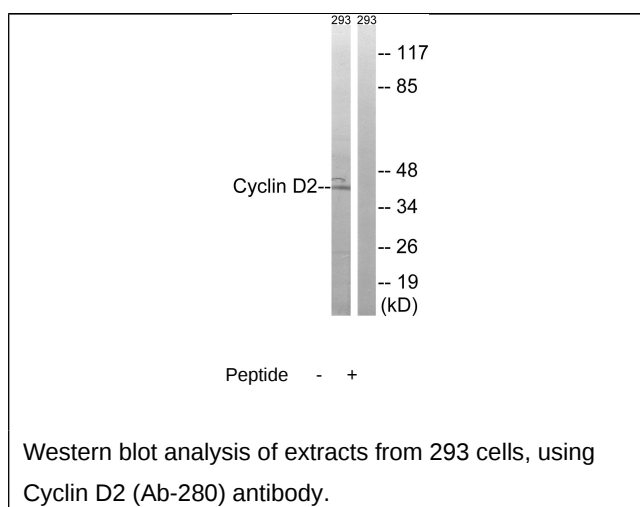
Applications: WB: 1:500~1:1000 ELISA: 1:20000

References:

[Xiong Y.](#), [Genomics 13:575-584\(1992\)](#).

[Palmero L.](#), [Oncogene 8:1049-1054\(1993\)](#).

[Kalnine N.](#), Submitted (OCT-2004) to the EMBL/GenBank/DDBJ databases.



For Research Use Only