



E2A (Phospho-Thr355) Antibody

E11-8339A

Catalog Number: E11-8339A

Concentration: 1mg/ml

Swiss-Prot No.: P15923

Other Names: E12; Immunoglobulin enhancer binding factor E12/E47; Immunoglobulin transcription factor-1; ITF1; Kappa-E2-binding factor; TCF-3; TCF3; TFE2; transcription factor 3 (E2A immunoglobulin enhancer binding factors E12/E47); Transcription factor E2-alpha; Transcription factor ITF-1; Transcription factor-3

All Sites: Human: Thr355; Mouse: Thr353; Rat: Thr351

Storage/Stability: Store at -20°C/1 year

Form of Antibody: Rabbit IgG in phosphate buffered saline (without Mg^{2+} and Ca^{2+}), pH 7.4, 150mM NaCl, 0.02% sodium azide and 50% glycerol.

Immunogen: The antiserum was produced against synthesized phosphopeptide derived from human E2A around the phosphorylation site of threonine 355 (P-S-T^P-P-V).

Purification: The antibody was affinity-purified from rabbit antiserum by affinity-chromatography using epitope-specific phosphopeptide. The antibody against non-phosphopeptide was removed by chromatography using non-phosphopeptide corresponding to the phosphorylation site.

Specificity: E2A (Phospho-Thr355) antibody detects endogenous levels of E2A only when phosphorylated at threonine 355.

Reactivity: Human (Identities = 100%, Positives = 100%); Mouse (Identities = 100%, Positives = 100%);
Rat (Identities = 100%, Positives = 100%)

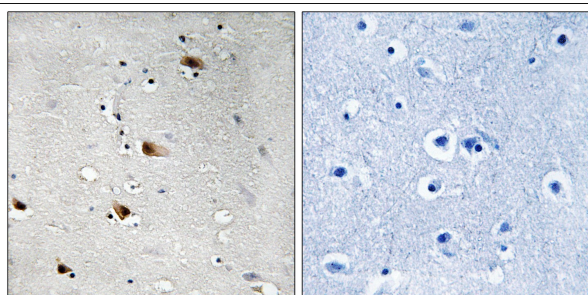
Applications: IHC: 1:50~1:100 ELISA: 1:1000

References:

Kamps M.P., Cell 60:547-555(1990).

Nourse J., Cell 60:535-545(1990).

Grimwood J., Nature 428:529-535(2004).



P-peptide - +

Immunohistochemistry analysis of paraffin-embedded human brain tissue using E2A (Phospho-Thr355) antibody.

For Research Use Only