



## E2A Antibody

E11-8339B

**Catalog Number:** E11-8339B

**Concentration:** 1mg/ml

**Swiss-Prot No.:** P15923

**Other Names:** E12; Immunoglobulin enhancer binding factor E12/E47; Immunoglobulin transcription factor-1; ITF1; Kappa-E2-binding factor; TCF-3; TCF3; TFE2; transcription factor 3 (E2A immunoglobulin enhancer binding factors E12/E47); Transcription factor E2-alpha; Transcription factor ITF-1; Transcription factor-3

**Storage/Stability:** Store at -20°C/1 year

**Form of Antibody:** Rabbit IgG in phosphate buffered saline (without  $Mg^{2+}$  and  $Ca^{2+}$ ), pH 7.4, 150mM NaCl, 0.02% sodium azide and 50% glycerol.

**Immunogen:** The antiserum was produced against synthesized peptide derived from Internal of human E2A.

**Purification:** The antibody was affinity-purified from rabbit antiserum by affinity-chromatography using epitope-specific immunogen.

**Specificity:** E2A antibody detects endogenous levels of total E2A protein.

**Reactivity:** Human (Identities = 100%, Positives = 100%);

Mouse (Identities = 100%, Positives =

100%);

Rat (Identities = 100%, Positives = 100%)

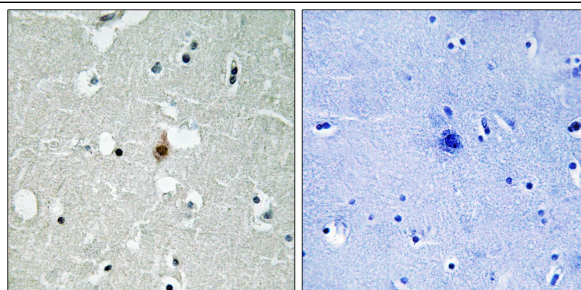
**Applications:** IHC: 1:50~1:100 ELISA: 1:5000

**References:**

Kamps M.P., Cell 60:547-555(1990).

Nourse J., Cell 60:535-545(1990).

Grimwood J., Nature 428:529-535(2004).



Peptide - +

Immunohistochemistry analysis of paraffin-embedded human brain tissue using E2A antibody.

**For Research Use Only**