



## Gab2 (Phospho-Ser623) Antibody

E11-8350A

**Catalog Number:** E11-8350A

**Concentration:** 1mg/ml

**Swiss-Prot No.:** Q9UQC2

**Other Names:** GRB2-associated-binding protein 2;  
Growth factor receptor bound protein 2-associated  
protein 2; GRB2-associated binder 2; pp100; KIAA0571

**All Sites:** Human: Ser623; Mouse: Ser612; Rat: Ser612

**Storage/Stability:** Store at -20°C/1 year

**Form of Antibody:** Rabbit IgG in phosphate buffered  
saline (without Mg<sup>2+</sup> and Ca<sup>2+</sup>), pH 7.4, 150mM NaCl,  
0.02% sodium azide and 50% glycerol.

**Immunogen:** The antiserum was produced against  
synthesized phosphopeptide derived from human Gab2  
around the phosphorylation site of serine 623  
(PS-S<sup>P</sup>-P-S).

**Purification:** The antibody was affinity-purified from  
rabbit antiserum by affinity-chromatography using

epitope-specific phosphopeptide. The antibody against  
non-phosphopeptide was removed by chromatography  
using non-phosphopeptide corresponding to the  
phosphorylation site.

**Specificity:** Gab2 (Phospho-Ser623) antibody detects  
endogenous levels of Gab2 only when phosphorylated at  
serine 623.

**Reactivity:** Human (Identities = 100%, Positives =  
100%); Mouse (Identities = 91%, Positives =  
91%);  
Rat (Identities = 91%, Positives = 91%)

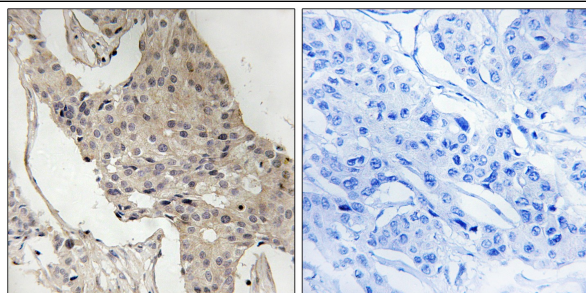
**Applications:** WB: 1:500~1:1000 IHC: 1:50~1:100  
ELISA: 1:1000

### References:

[Nishida K.](#), Blood 93:1809-1816(1999).

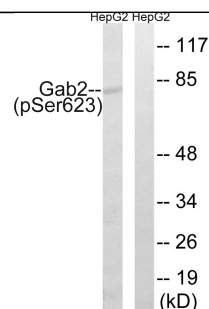
[Nagase T.](#), DNA Res. 5:31-39(1998).

[Taylor T.D.](#), Nature 440:497-500(2006).



P-peptide      -                      +

Immunohistochemistry analysis of paraffin-embedded  
human breast carcinoma tissue using Gab2  
(Phospho-Ser623) antibody.



PMA      +      +  
P-peptide   -      +

Western blot analysis of extracts from HepG2 cells,  
treated with PMA (125ng/ml, 30mins), using Gab2  
(Phospho-Ser623) antibody.

**For Research Use Only**