



## Gab2 (Ab-623) Antibody

E11-8350B

**Catalog Number:** E11-8350B

**Concentration:** 1mg/ml

**Swiss-Prot No.:** Q9UQC2

**Other Names:** GABJ; GRB2-associated binding protein 2; KIAA0571; pp100

**Storage/Stability:** Store at -20°C/1 year

**Form of Antibody:** Rabbit IgG in phosphate buffered saline (without  $Mg^{2+}$  and  $Ca^{2+}$ ), pH 7.4, 150mM NaCl, 0.02% sodium azide and 50% glycerol.

**Immunogen:** The antiserum was produced against synthesized non-phosphopeptide derived from human Gab2 around the phosphorylation site of serine 623 (P-S-S<sup>P</sup>-P-S).

**Purification:** The antibody was affinity-purified from rabbit antiserum by affinity-chromatography using

epitope-specific immunogen.

**Specificity:** Gab2 (Ab-623) antibody detects endogenous levels of total Gab2 protein.

**Reactivity:** Human (Identities = 100%, Positives =

100%); Mouse (Identities = 91%, Positives = 91%);

Rat (Identities = 91%, Positives = 91%)

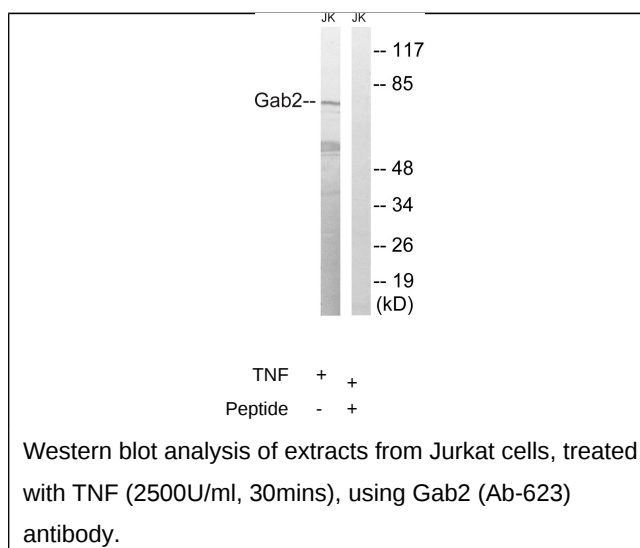
**Applications:** WB: 1:500~1:1000 ELISA: 1:40000

### References:

Nishida K., Blood 93:1809-1816(1999).

Nagase T., DNA Res. 5:31-39(1998).

Salomon A.R., Proc. Natl. Acad. Sci. U.S.A. 100:443-448(2003).



**For Research Use Only**