



## Girdin (Phospho-Ser1417) Antibody

E11-8352A

**Catalog Number:** E11-8352A

**Concentration:** 1mg/ml

**Swiss-Prot No.:** Q3V6T2

**Other Names:** APE; GIV; GRDN; HkRP1; Hook-related protein 1; KIAA1212

**All Sites:** Human: Ser1417; Mouse: Ser1417

**Storage/Stability:** Store at -20°C/1 year

**Form of Antibody:** Rabbit IgG in phosphate buffered saline (without  $Mg^{2+}$  and  $Ca^{2+}$ ), pH 7.4, 150mM NaCl, 0.02% sodium azide and 50% glycerol.

**Immunogen:** The antiserum was produced against synthesized phosphopeptide derived from human Girdin around the phosphorylation site of serine 1417 (Q-K-S<sup>P</sup>-L-T).

**Purification:** The antibody was affinity-purified from

rabbit antiserum by affinity-chromatography using

epitope-specific phosphopeptide. The antibody against non-phosphopeptide was removed by chromatography using non-phosphopeptide corresponding to the phosphorylation site.

**Specificity:** Girdin (Phospho-Ser1417) antibody detects endogenous levels of Girdin only when phosphorylated at serine 1417.

**Reactivity:** Human (Identities = 100%, Positives = 100%); Mouse (Identities = 100%, Positives = 100%)

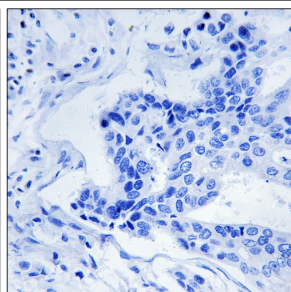
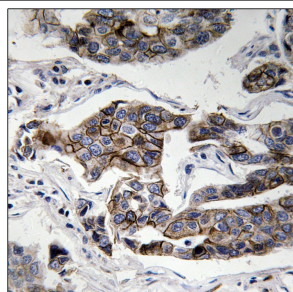
**Applications:** IHC: 1:50~1:100 ELISA: 1:1000

### References:

Enomoto A., Dev. Cell 9:389-402(2005).

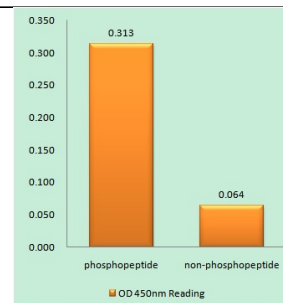
Simpson F., Traffic 6:442-458(2005).

Hillier L.W., Nature 434:724-731(2005).



P-peptide - +

Immunohistochemistry analysis of paraffin-embedded human breast carcinoma tissue using Girdin (Phospho-Ser1417) antibody.



Girdin (Phospho-Ser1417) antibody reacts with epitope-specific phosphopeptide and corresponding non-phosphopeptide. The absorbance readings at 450 nM are shown in the ELISA figure.

**For Research Use Only**